

South Orange & Maplewood School District

2010-2011 HSPA Assessment

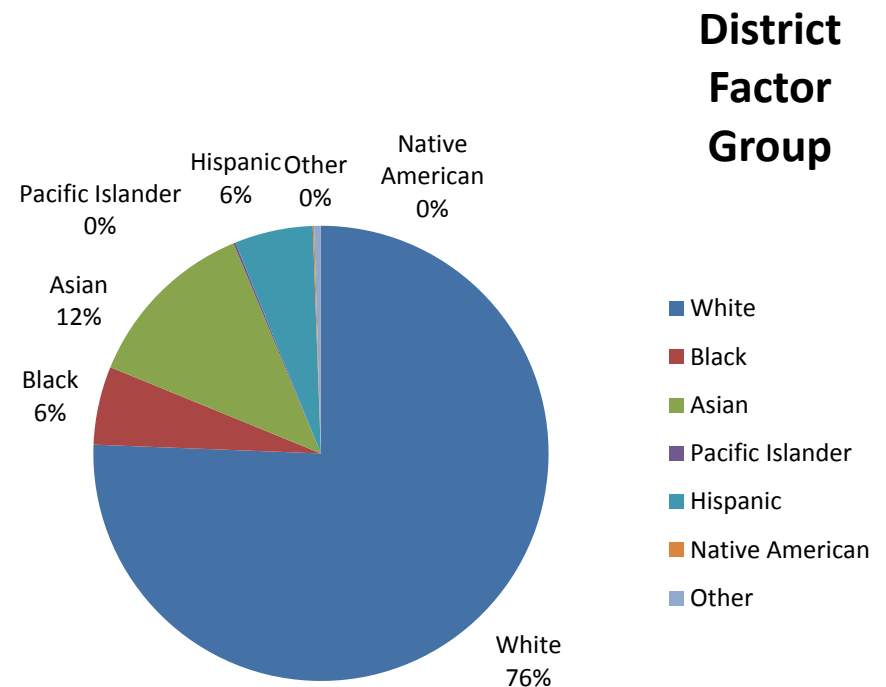
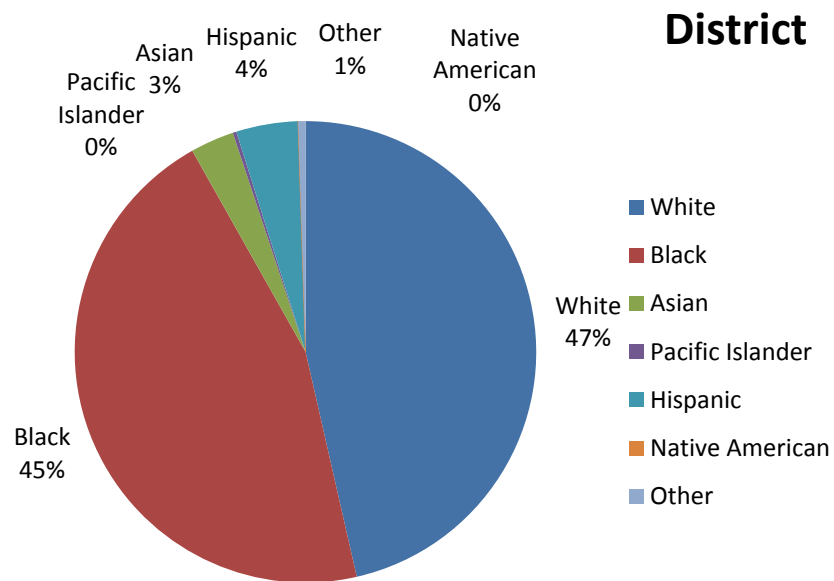
August 22, 2011

Color Key

- All percentages that appear in **green** indicate a new maximum value that is favorable.
- All gaps that appear in **green** indicate a new minimum value that is favorable
- All percentages that appear in **red** indicate a new minimum value that is NOT favorable.
- All gaps that appear in **red** indicate a new maximum value that is NOT favorable.
- Results were compared to the previous 8 school years.

2010-2011 HSPA Results - Status						
Category	Black	White	Achievement Gap	District	DFG	DFG Gap
Math – Proficient & Advanced Proficient	District 68.7%	District 97.8%	29.1	82.5%	88.9%	6.4
	DFG 66.0%	DFG 90.8%	DFG 24.8			
Math – Advanced Proficient	District 11.7%	District 61.4%	49.7	36.2%	43.4%	7.2
	DFG 12.8%	DFG 43.3%	DFG 30.5			
Language Arts – Proficient & Advanced Proficient	District 89.9%	District 100.0%	10.1	94.6%	96.5%	1.9
	DFG 89.8%	DFG 97.5%	DFG 7.7			
Language Arts – Advanced Proficient	District 10.1%	District 57.7%	47.6	32.9%	37.1%	4.2
	DFG 15.1%	DFG 37.6%	DFG 22.5			

If a larger percent of black and white district students scored proficient or better in Language Arts than black and white students in the DFG, why is there a 1.9 percentage point performance gap between the district and the DFG?

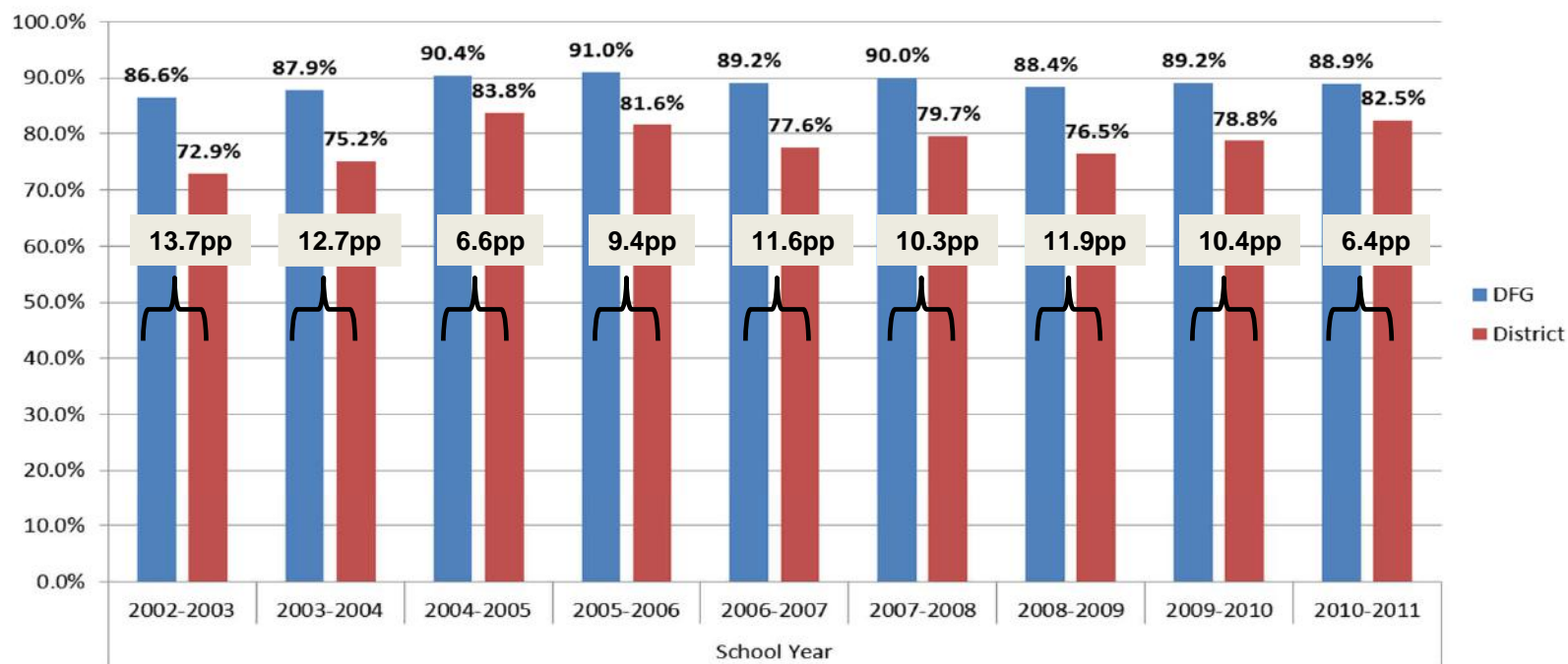


2010-2011 HSPA Assessment
August 22, 2011

DFG GAP

2010-2011 HSPA – Math DFG Gap

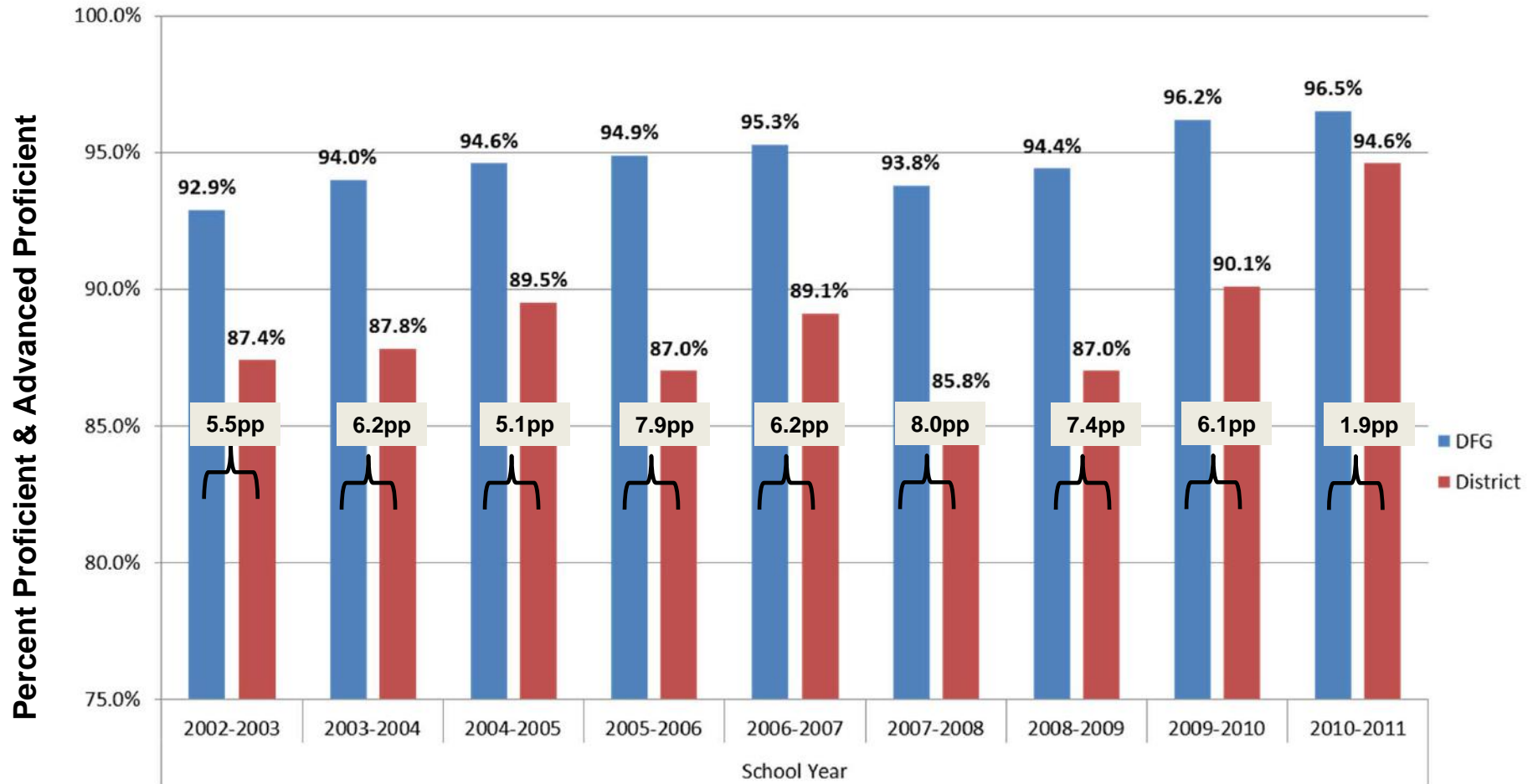
Percent Proficient & Advanced Proficient



2010-2011 HSPA – Math DFG Gap

- 82.5% of our students scored proficient, 6.4 percentage points lower than the DFG.
- During the last 9 years the gap reached a minimum of 6.4 percentage points and a maximum of 13.7 percentage points.
- During the last 9 years the lowest percentage of district students scoring proficient was 72.9% and DFG students was 86.6%. The maximum percentage of district students scoring proficient was 83.8% and DFG students was 91.0%.

2010-2011 HSPA - Language Arts DFG Gap



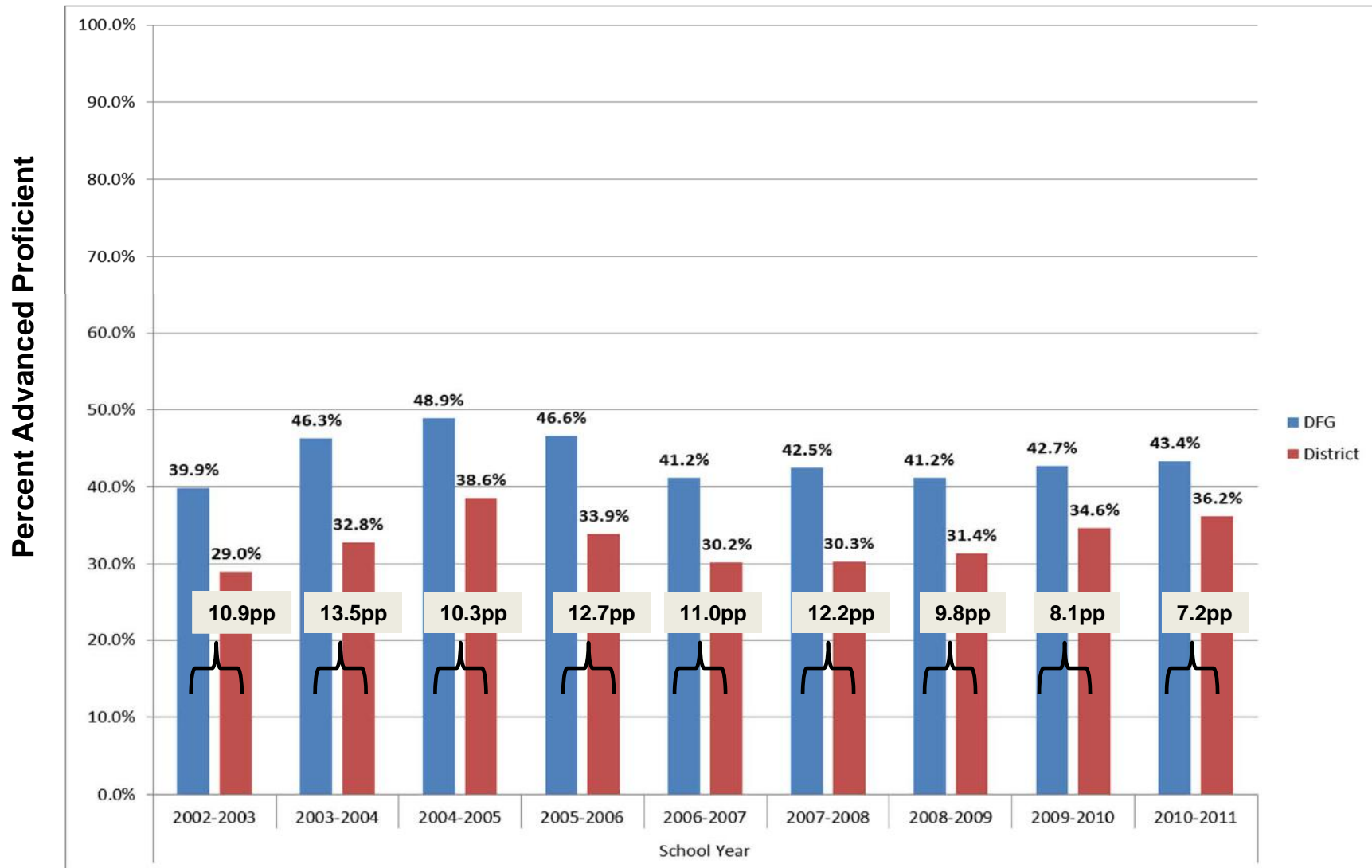
2010-2011

HSPA – Language Arts

DFG Gap

- 94.6% of our students scored proficient, 1.9 percentage points lower than the DFG.
- During the last 9 years the gap reached a minimum of 1.9 percentage points and a maximum of 8.0 percentage points.
- During the last 9 years the lowest percentage of district students scoring proficient was 85.8% and DFG students was 92.9%. The maximum percentage of district students scoring proficient was 94.6% and DFG students was 96.5%.

2010-2011 HSPA – Math DFG Gap

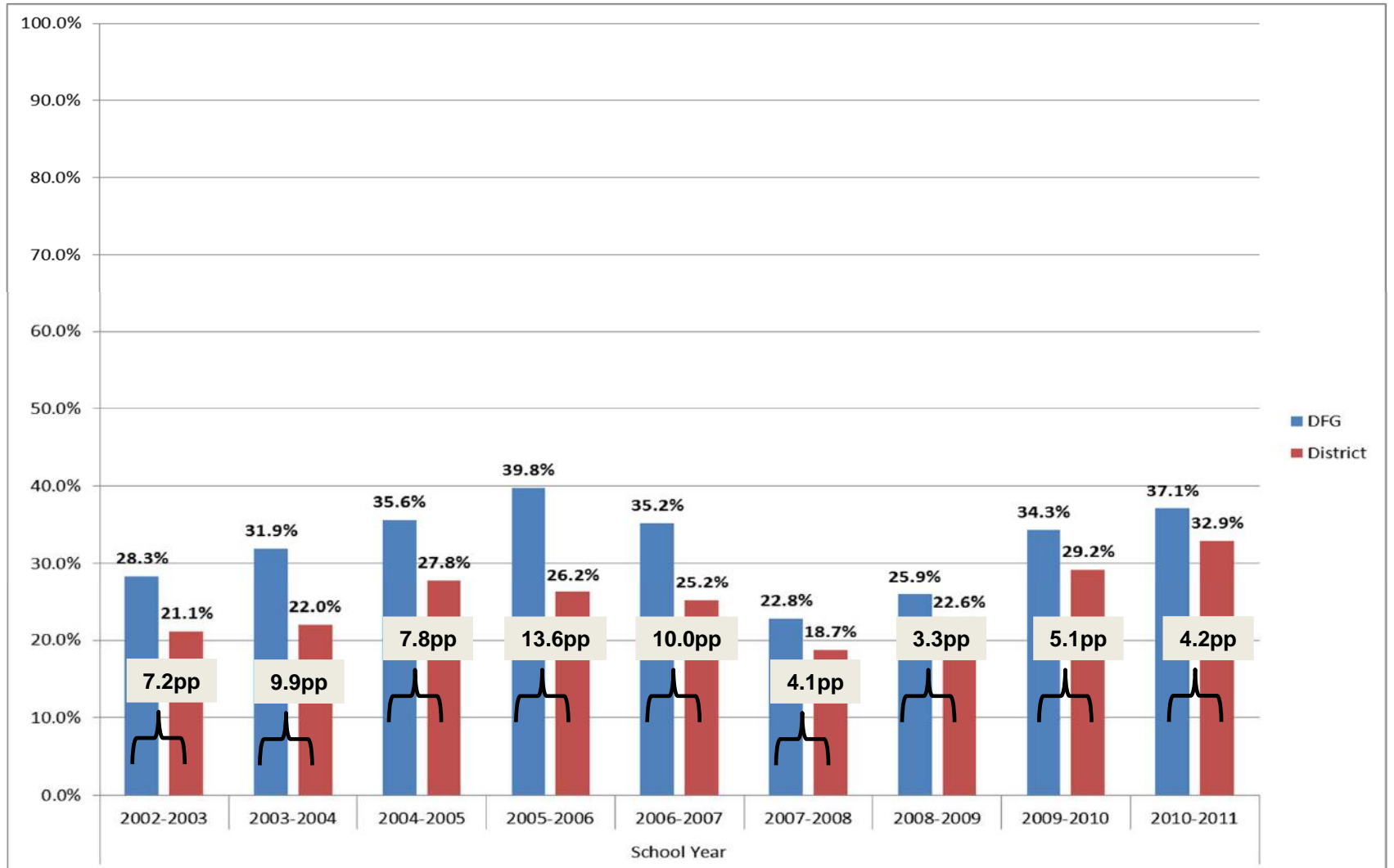


2010-2011 HSPA – Math DFG Gap

- 36.2% of our students scored advanced proficient, 7.2 percentage points lower than the DFG.
- During the last 9 years the gap reached a minimum of 7.2 percentage points and a maximum of 13.5 percentage points.
- During the last 9 years the lowest percentage of district students scoring advanced proficient was 29.0% and DFG students was 39.9%. The maximum percentage of district students scoring advanced proficient was 38.6% and DFG students was 48.9%.

2010-2011 HSPA - Language Arts DFG Gap

Percent Advanced Proficient



2010-2011

HSPA – Language Arts

DFG Gap

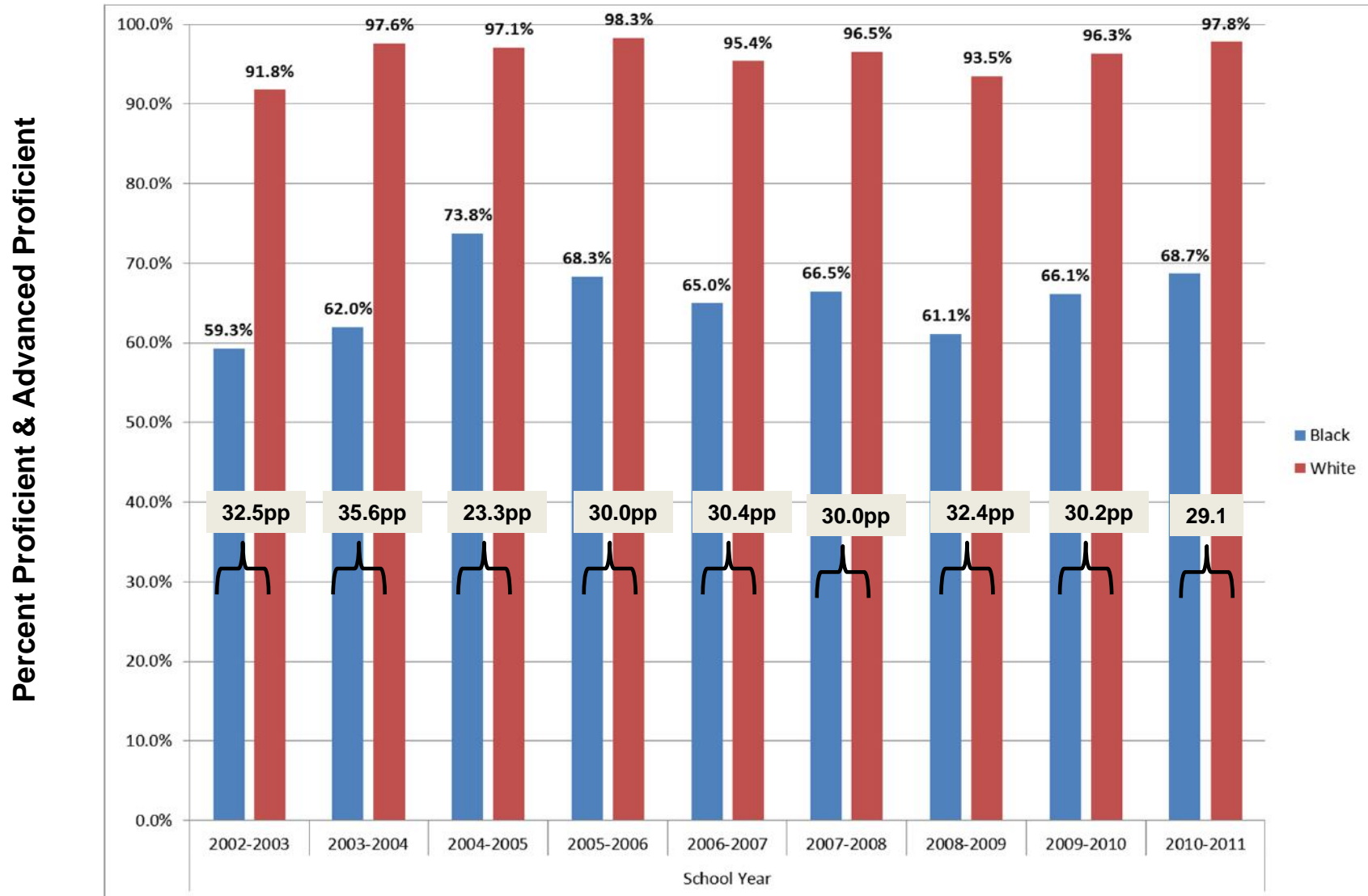
- 32.9% of our students scored advanced proficient, 4.2 percentage points lower than the DFG.
- During the last 9 years the gap reached a minimum of 3.3 percentage points and a maximum of 13.6 percentage points.
- During the last 9 years the lowest percentage of district students scoring advanced proficient was 18.7% and DFG students was 22.8%. The maximum percentage of district students scoring advanced proficient was 32.9% and DFG students was 39.8%.

2010-2011 HSPA Assessment

August 22, 2011

ACHIEVEMENT GAP

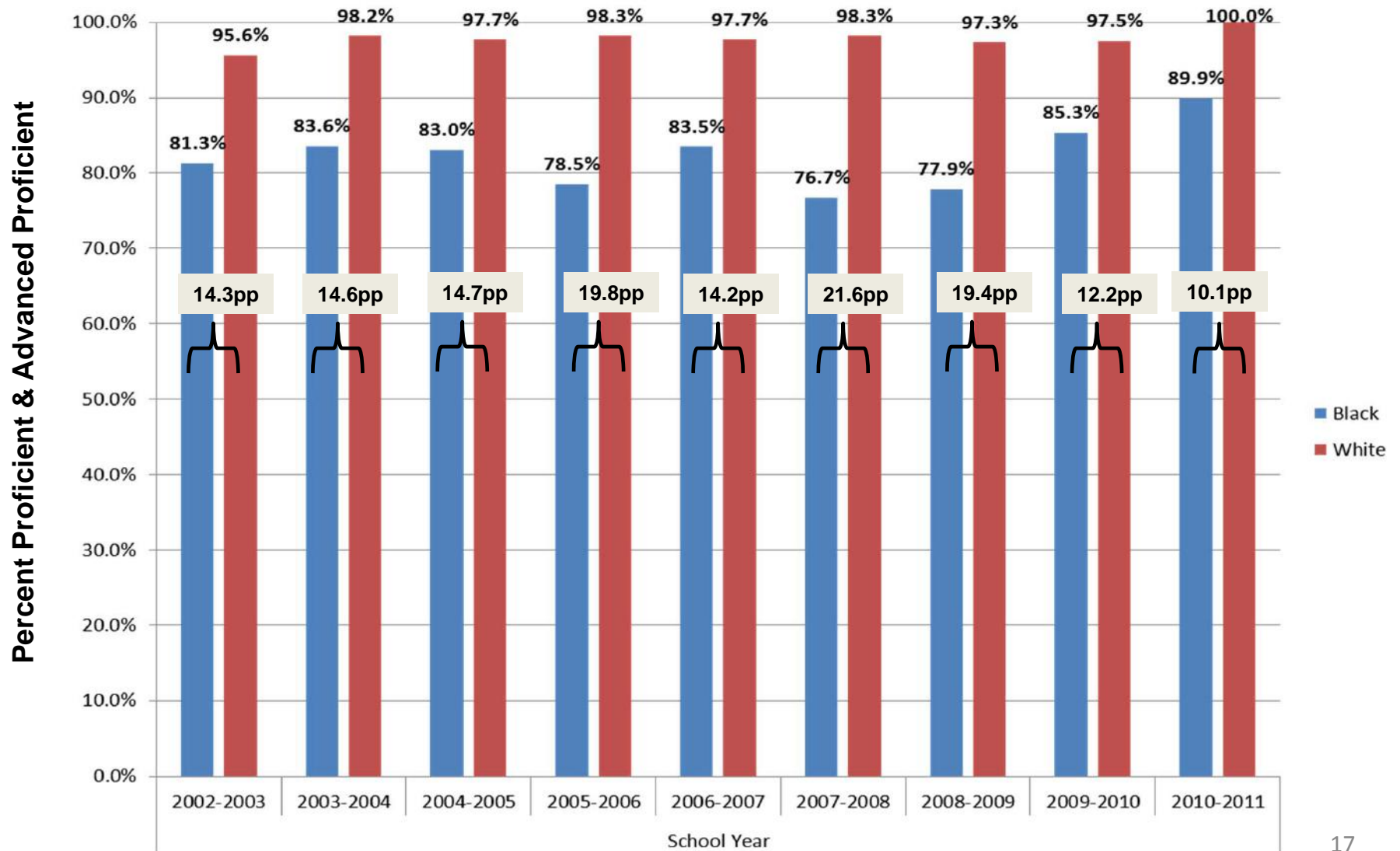
2010-2011 HSPA - Math Achievement Gap



2010-2011 HSPA – Math Achievement Gap

- 68.7% of our black students and 97.8% of our white students scored proficient. This is a 29.1 percentage point achievement gap.
- During the last 9 years the gap reached a minimum of 23.3 percentage points and a maximum of 35.6 percentage points.
- During the last 9 years the lowest percentage of black students scoring proficient was 59.3% and white students was 91.8%. The maximum percentage of black students scoring proficient was 73.8% and white students was 98.3%.

2010-2011 HSPA – Language Arts Achievement Gap



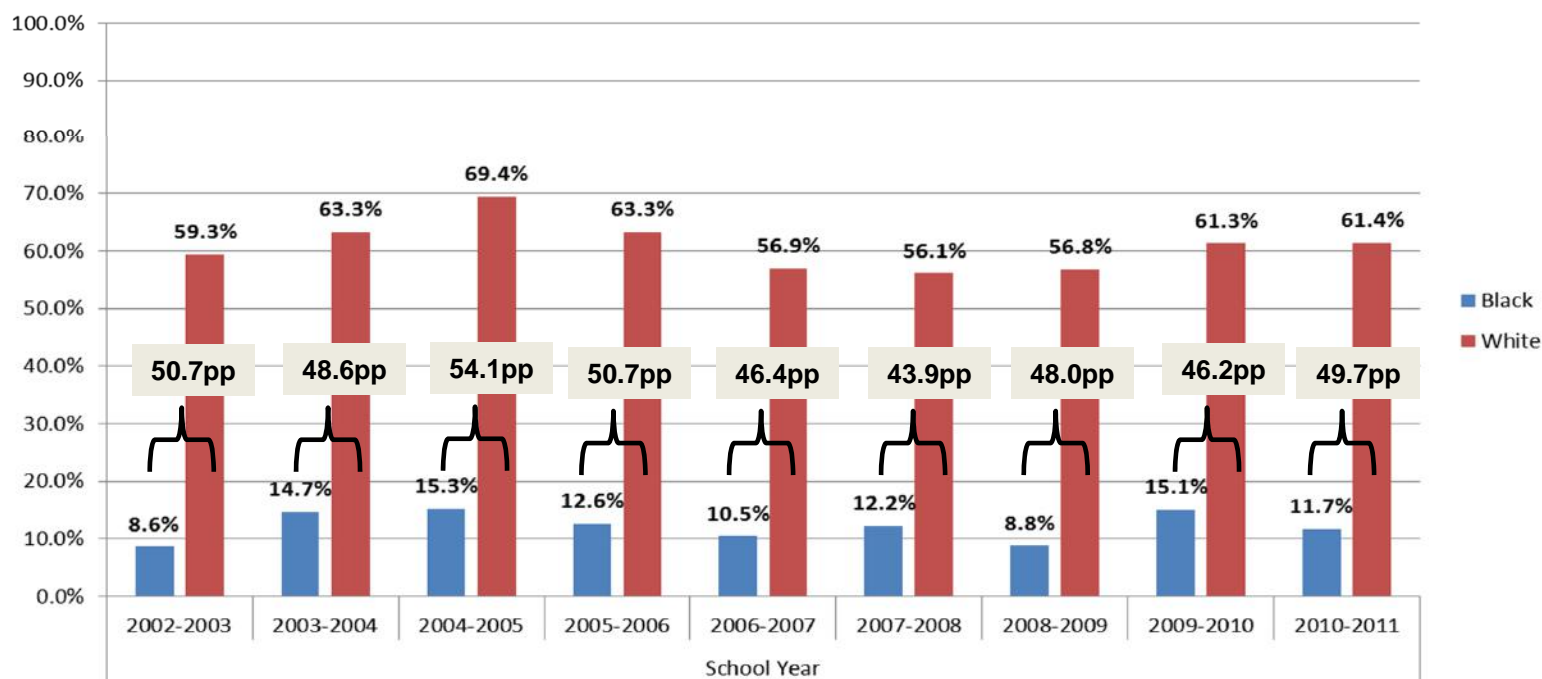
2010-2011

HSPA – Language Arts Achievement Gap

- 89.9% of our black students and 100% of our white students scored proficient. This is a 10.1 percentage point achievement gap.
- During the last 9 years the gap reached a minimum of 10.1 percentage points and a maximum of 21.6 percentage points.
- During the last 9 years the lowest percentage of black students scoring proficient was 76.7% and white students was 95.6%. The maximum percentage of black students scoring proficient was 89.9% and white students was 100%.

2010-2011 HSPA - Math Achievement Gap

Percent Advanced Proficient

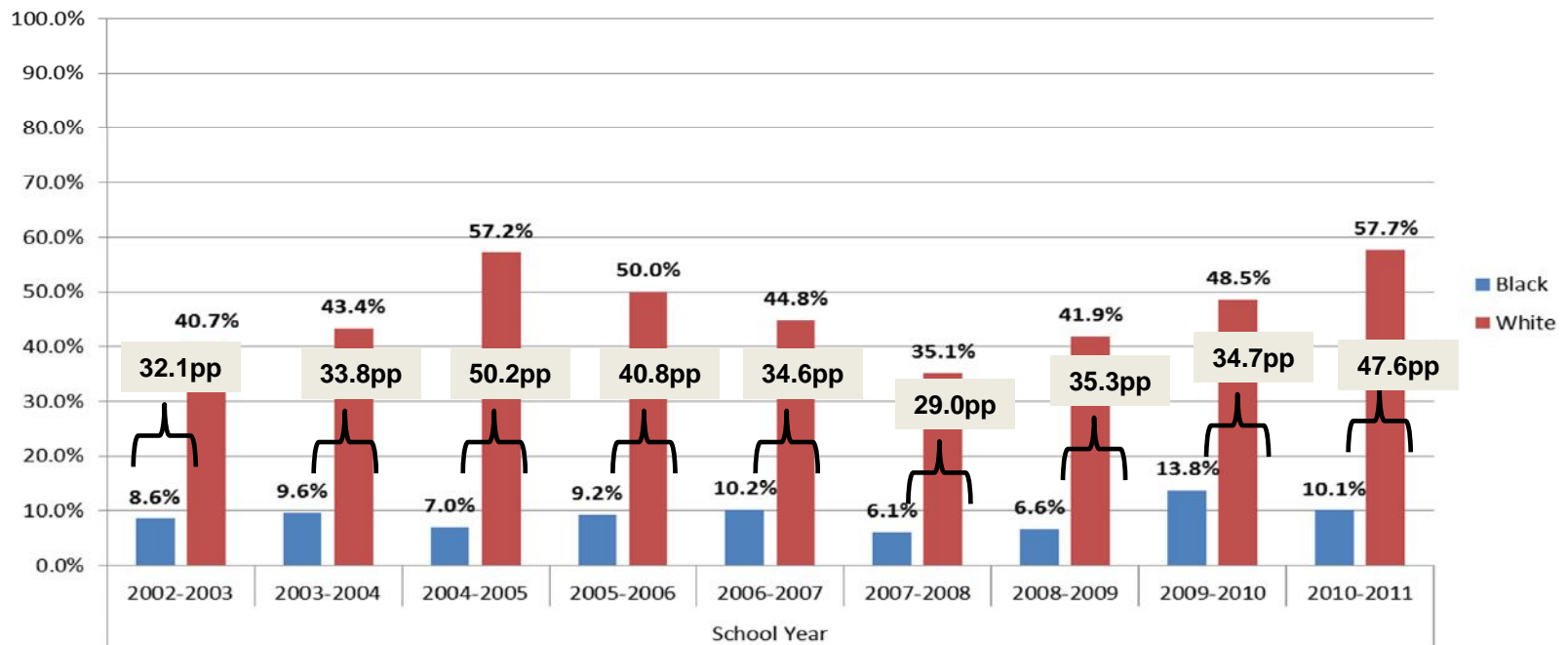


2010-2011 HSPA – Math Achievement Gap

- 11.7% of our black students and 61.4% of our white students scored advanced proficient. This is a 49.7 percentage point achievement gap.
- During the last 9 years the gap reached a minimum of 43.9 percentage points and a maximum of 54.1 percentage points.
- During the last 9 years the lowest percentage of black students scoring advanced proficient was 8.6% and white students was 56.1%. The maximum percentage of black students scoring advanced proficient was 15.3% and white students was 69.4%.

2010-2011 HSPA – Language Arts Achievement Gap

Percent Advanced Proficient



2010-2011

HSPA – Language Arts Achievement Gap

- 10.1% of our black students and 57.7% of our white students scored advanced proficient. This is a 47.6 percentage point achievement gap.
- During the last 9 years the gap reached a minimum of 29.0 percentage points and a maximum of 50.2 percentage points.
- During the last 9 years the lowest percentage of black students scoring advanced proficient was 6.1% and white students was 35.1%. The maximum percentage of black students scoring advanced proficient was 13.8% and white students was 57.7%.

Why is the percent of white students scoring advanced proficient in Language Arts trending up and the percent of black students scoring advanced proficient in Language Arts remaining flat?

Average Scale Scores in Math						
	District Math			DFG Math		
	Black	White	Total	Black	White	Total
2008-2009	208.4	245.6	226.2	210.2	238	236.9
2009-2010	211.9	247.2	227.1	211.5	239	237.9
2010-2011	214.3	250.4	232.1	212.3	239.1	238.1

Average Scale Scores in Language Arts						
	District Language Arts			DFG Language Arts		
	Black	White	Total	Black	White	Total
2008-2009	216.1	243.3	229	218.3	237.4	236
2009-2010	223.9	246.6	233.6	224	241.6	240.3
2010-2011	224.8	249.6	237.1	227.4	242.2	241.2

- The aggregate scale scores in Math and Language Arts in our District increased more than the DFG.
- The average scale scores in Math and Language Arts for black students in our District increased more than our white students.
- The average scale scores in Math and Language Arts for white students in our District start out closer to the advanced proficient cut-off as compared to our black students.
- The average scale scores in Math and Language Arts for black students in our district are increasing at a greater rate than our white students, while the average scores of our white students are closer to the advanced proficient cut-score.

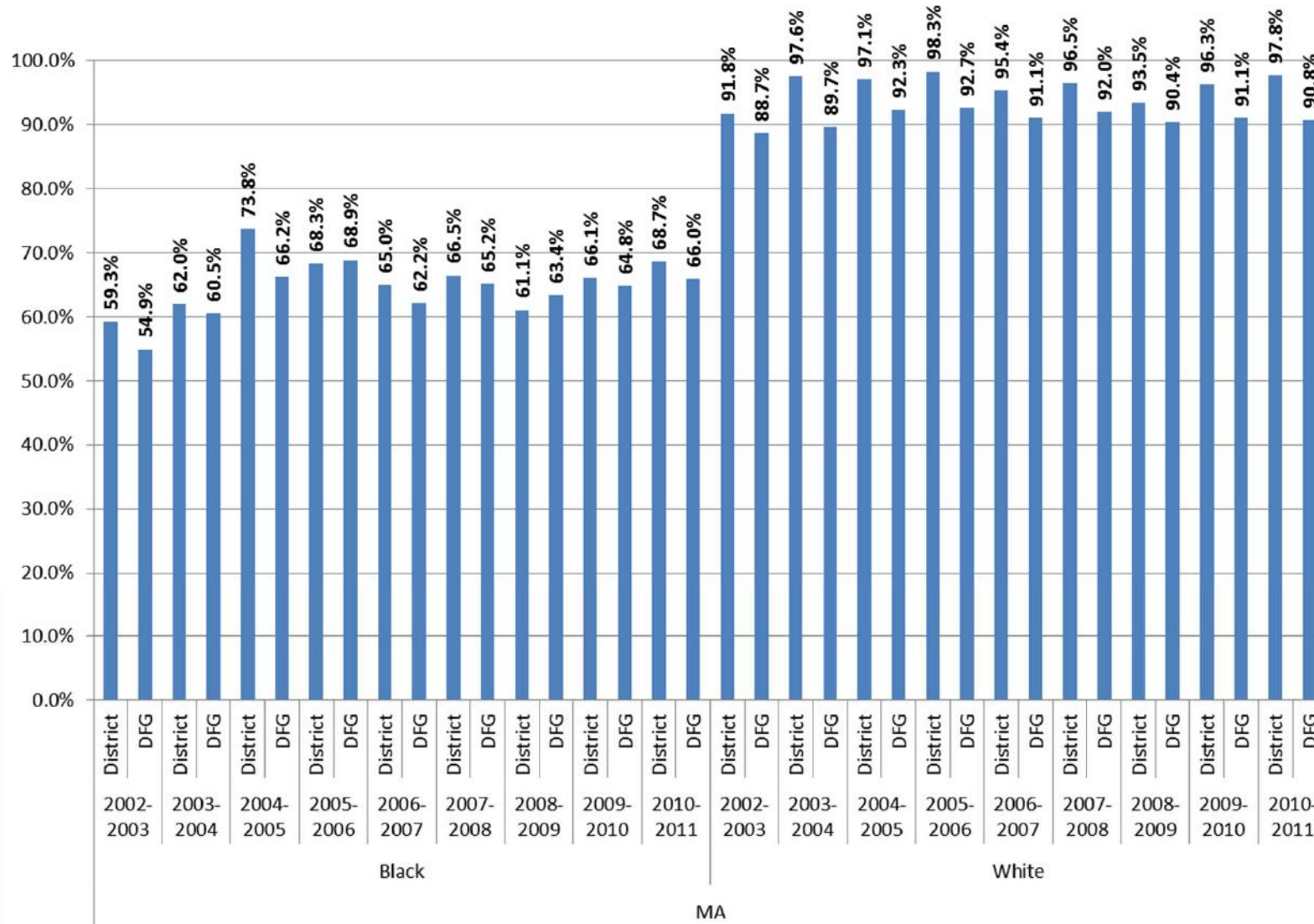
2010-2011 HSPA Assessment

August 22, 2011

DISTRICT VS. DFG BY ETHNICITY

2010-2011 HSPA Math - District vs. DFG by Ethnicity

Proficient & Advanced Proficient



2010-2011 HSPA – Math District vs. DFG by Ethnicity

- 68.7% of our black students and 66.0% of the DFG black students scored proficient. This is a -2.7 percentage point achievement gap.
- During the last 9 years the gap reached a minimum of 2.3 percentage points and a maximum of -7.6 percentage points.
- During the last 9 years the lowest percentage of district black students scoring proficient was 59.3% and DFG black students was 54.9%. The maximum percentage of district black students scoring proficient was 73.8% and DFG black students was 68.9%.

*A negative Gap indicates district students are performing better than the DFG students

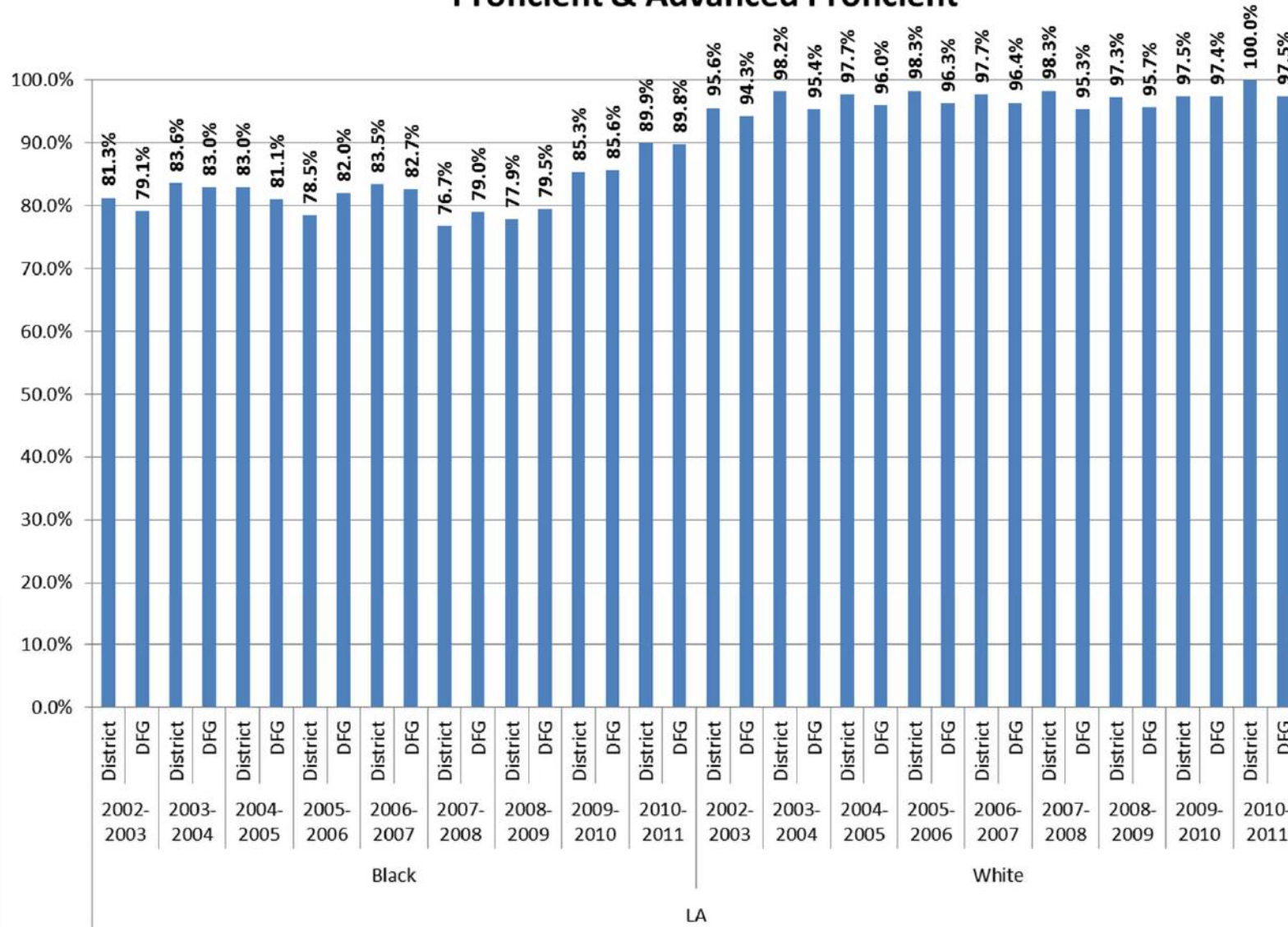
2010-2011 HSPA – Math District vs. DFG by Ethnicity

- 97.8% of our white students and 90.8% of the DFG white students scored proficient. This is a -7.0 percentage point achievement gap.
- During the last 9 years the gap reached a minimum of -3.1 percentage points and a maximum of -7.9 percentage points.
- During the last 9 years the lowest percentage of district white students scoring proficient was 91.8% and DFG white students was 88.7%. The maximum percentage of district white students scoring proficient was 98.3% and DFG white students was 92.7%.

*A negative Gap indicates district students are performing better than the DFG students

2010-2011 HSPA Language Arts - District vs. DFG by Ethnicity

Proficient & Advanced Proficient



2010-2011

HSPA – Language Arts

District vs. DFG by Ethnicity

- 89.9% of our black students and 89.8% of the DFG black students scored proficient. This is a -.1% percentage point achievement gap.
- During the last 9 years the gap reached a minimum of -2.2 percentage points and a maximum of 3.5 percentage points.
- During the last 9 years the lowest percentage of district black students scoring proficient was 76.7% and DFG black students was 79%. The maximum percentage of district black students scoring proficient was 89.9% and DFG black students was 89.8%.

*A negative Gap indicates district students are performing better than the DFG students

2010-2011

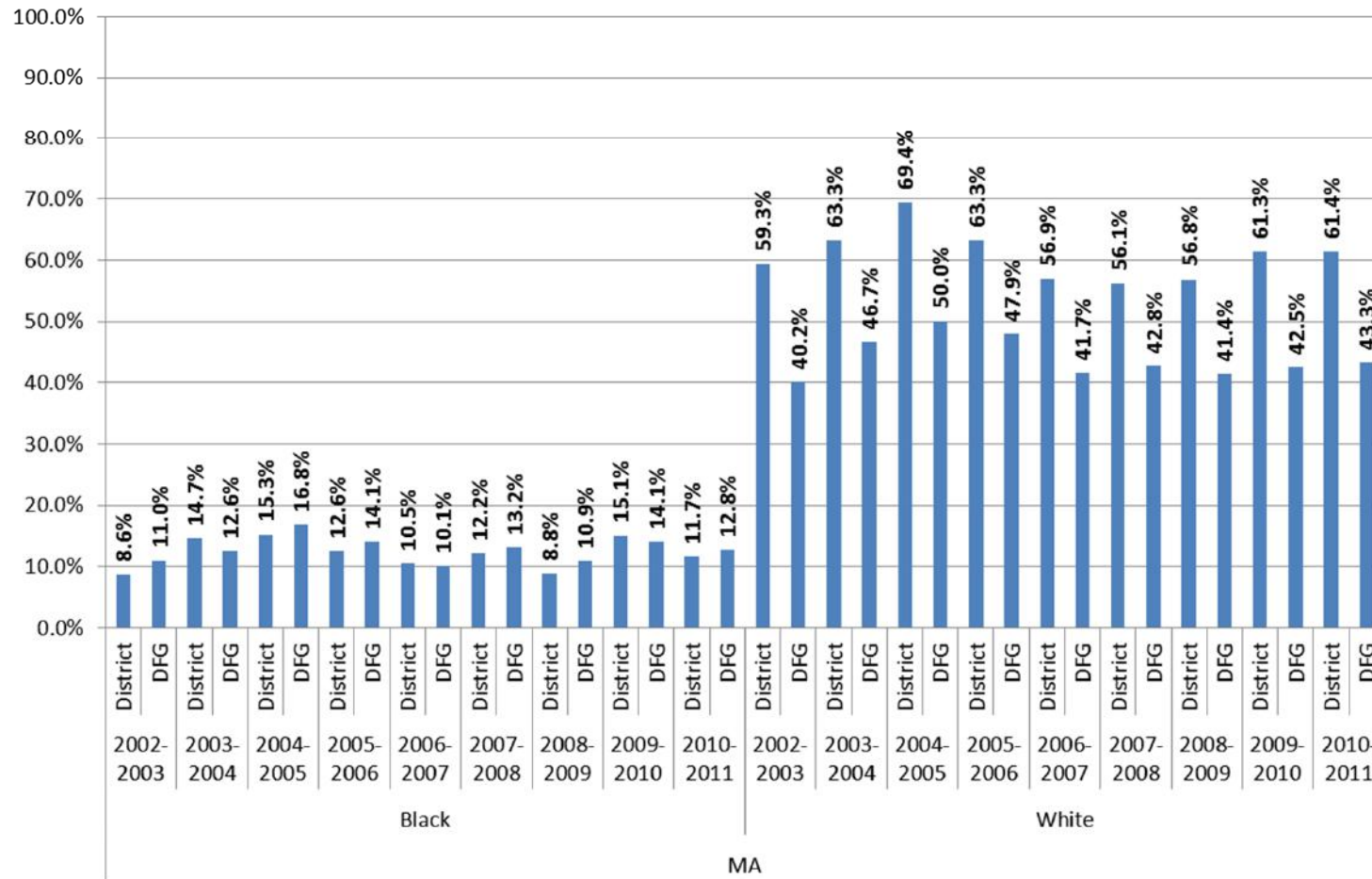
HSPA – Language Arts

District vs. DFG by Ethnicity

- 100% of our white students and 97.5% of the DFG white students scored proficient. This is a -2.5 percentage point achievement gap.
- During the last 9 years the gap reached a minimum of -2.8 percentage points and a maximum of -.1 percentage points.
- During the last 9 years the lowest percentage of district white students scoring proficient was 95.6% and DFG white students was 94.3%. The maximum percentage of district white students scoring proficient was 100% and DFG white students was 97.5%.

*A negative Gap indicates district students are performing better than the DFG students

2010-2011 HSPA Math - District vs. DFG by Ethnicity Advanced Proficient



2010-2011 HSPA – Math District vs. DFG by Ethnicity

- 11.7% of District black students and 12.8% of DFG black students scored advanced proficient. This is a 1.1 percentage point achievement gap.
- During the last 9 years the gap reached a minimum of -2.1 percentage points and a maximum of 2.4 percentage points.
- During the last 9 years the lowest percentage of District black students scoring advanced proficient was 8.6% and DFG black students was 10.1%. The maximum percentage of district black students scoring advanced proficient was 15.3% and DFG black students was 16.8%.

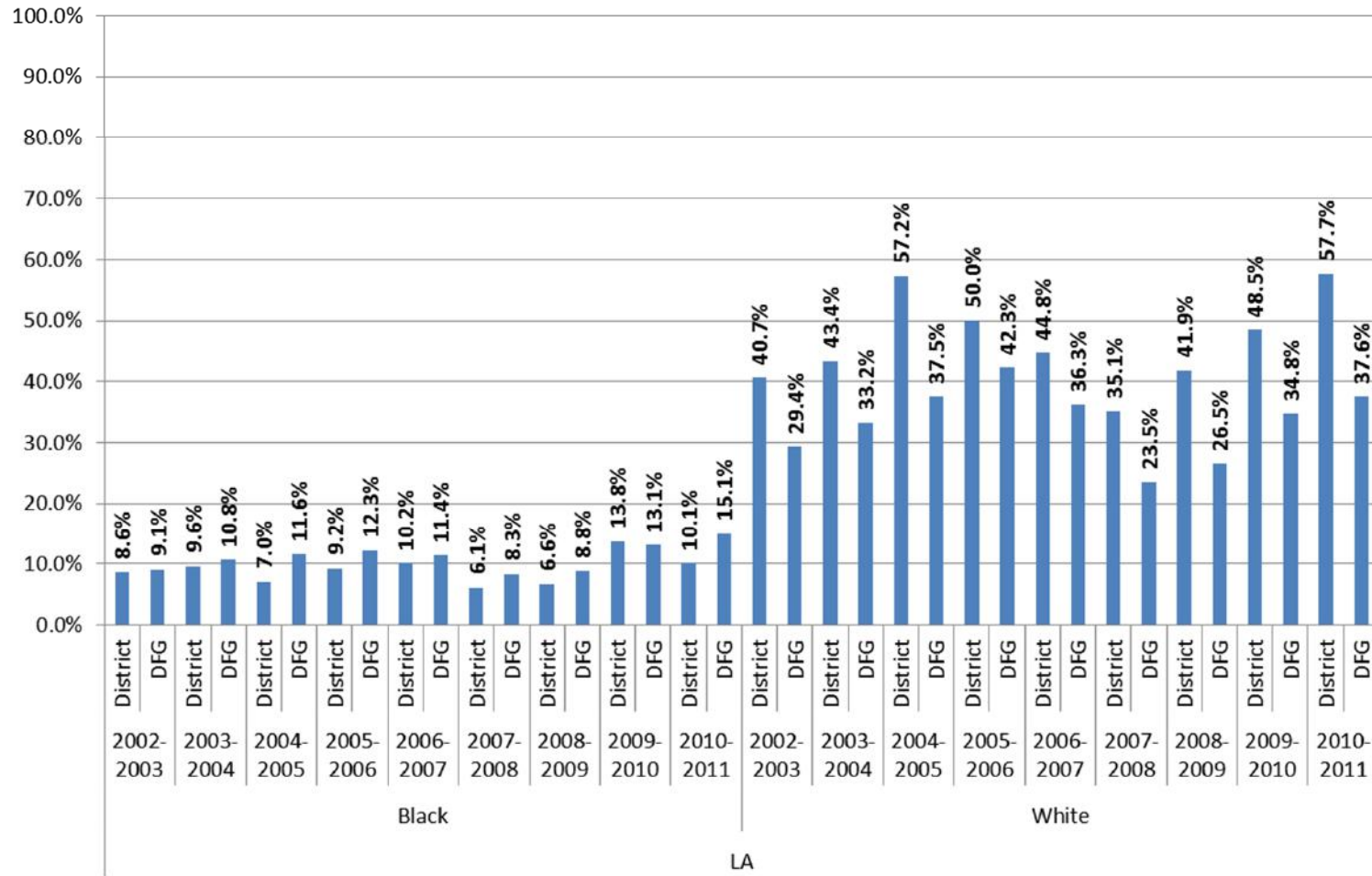
*A negative Gap indicates district students are performing better than the DFG students

2010-2011 HSPA – Math District vs. DFG by Ethnicity

- 61.4% of District white students and 43.3% of DFG white students scored advanced proficient. This is a -18.1 percentage point achievement gap.
- During the last 9 years the gap reached a minimum of -13.3 percentage points and a maximum of -19.1 percentage points.
- During the last 9 years the lowest percentage of District white students scoring advanced proficient was 56.1% and DFG white students was 40.2%. The maximum percentage of district white students scoring advanced proficient was 69.4% and DFG white students was 50.0%.

*A negative Gap indicates district students are performing better than the DFG students

2010-2011 HSPA Language Arts - District vs. DFG by Ethnicity Advanced Proficient



2010-2011

HSPA – Language Arts

District vs. DFG by Ethnicity

- 10.1% of District black students and 15.1% of DFG black students scored advanced proficient. This is a gap of 5.0 percentage points.
- During the last 9 years the gap reached a minimum of -.7 percentage points and a maximum of 5.0 percentage points.
- During the last 9 years the lowest percentage of District black students scoring advanced proficient was 6.1% and DFG black students was 8.3%. The maximum percentage of district black students scoring advanced proficient was 13.8% and DFG black students was 15.1%.

*A negative Gap indicates district students are performing better than the DFG students

2010-2011

HSPA – Language Arts

District vs. DFG by Ethnicity

- 57.7% of District white students and 37.6% of DFG white students scored advanced proficient. This is a -20.1 percentage point achievement gap.
- During the last 9 years the gap reached a minimum of -7.7 percentage points and a maximum of -20.1 percentage points.
- During the last 9 years the lowest percentage of District white students scoring advanced proficient was 35.1% and DFG white students was 23.5%. The maximum percentage of district white students scoring advanced proficient was 57.7% and DFG white students was 42.3%.

*A negative Gap indicates district students are performing better than the DFG students

2010-2011 HSPA Highlights

- The highest percent of students scored proficient or better while achieving the smallest DFG gap in Language Arts in 9 years.
- The highest percent of black and white students scored proficient or better while achieving the smallest achievement gap in Language arts in 9 years.
- The highest percent of black students (District and DGF) scored advanced proficient in Language Arts in 9 years.
- The highest percentage of district white students and total district students scored advanced proficient in Language Arts in 9 years.
- The smallest DFG gap between the percentage of students scoring proficient or better and advanced proficient in Math in 9 years.