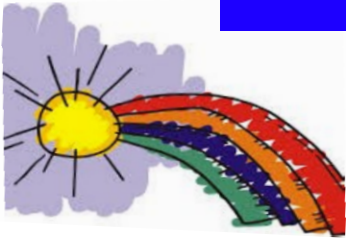


## ***South Orange & Maplewood School District***

### **Elementary School Social Work Program**

**Individual &  
Group Counseling  
Services**



## **Counseling Program**

The Elementary School Social Work Program offers counseling services for students at each of South Orange and Maplewood School District's elementary schools. The program offers remote individual and small group counseling with a social work intern. Its aim is to remove barriers to success and to provide students with the social/ emotional support necessary for them to get the most out of their school experience.

### **For More Information**

Please click the link below:

<https://forms.gle/M34PcQYDKbatkySg8>

**Helping  
Students  
Succeed**



## **Services**

### **Areas of Focus can Include:**

- Dealing with the many changes that COVID-19 has brought to schools and homes
- Dealing with anxiety
- Managing your feelings (stress, worry, anger, etc.)
- Feeling good about yourself
- Working out friendship problems
- Dealing with peer pressure and bullying
- Dealing with behavioral concerns
- Dealing with loss or family changes
- Crises intervention
- Referrals

### **THE ELEMENTARY SCHOOL SOCIAL WORK PROGRAM** South Orange Maplewood School District

525 Academy Street  
Maplewood, NJ 07040

Karen Weiland, LCSW  
Tel. (973) 762-5600 Ext. 1850

