



Getting Ready For Success in Maplewood Middle School

**June 9, 2020
7:30pm via WebEx**

Follow us on Social Media!

Follow us on Twitter!

@MMSCougarPride

Follow us on Instagram!

@mms_cougar



Maplewood Middle School



Cougar Pride

MMS Core Values

Here we believe in:

Effective Effort * Inclusiveness

****Kindness * Team work***

**** Learning***

We center our work on student voice.

Tonight's Agenda

- Greetings from the MMS Leadership Team **Ms. Gronau, Mr. Brown** and ***Mr. King**
- Meet 3 of our teachers--this year's 6th Grade Team Leaders **Ms. O'Sullivan, Mr. Stewart** and **Ms. Varney**
- Meet your Home and School Association (HSA) Co-Presidents **Veronica Olazabal** and **Kelly Harris**
- Meet **Julie Porter**, School Nurse
- Meet **April Battle**, School Counselor
- Highlights from Ms. Gronau and Mr. Brown about programming and extra-curricular experiences at MMS.
- Q & A
- Closing Comments from Ms. Gronau

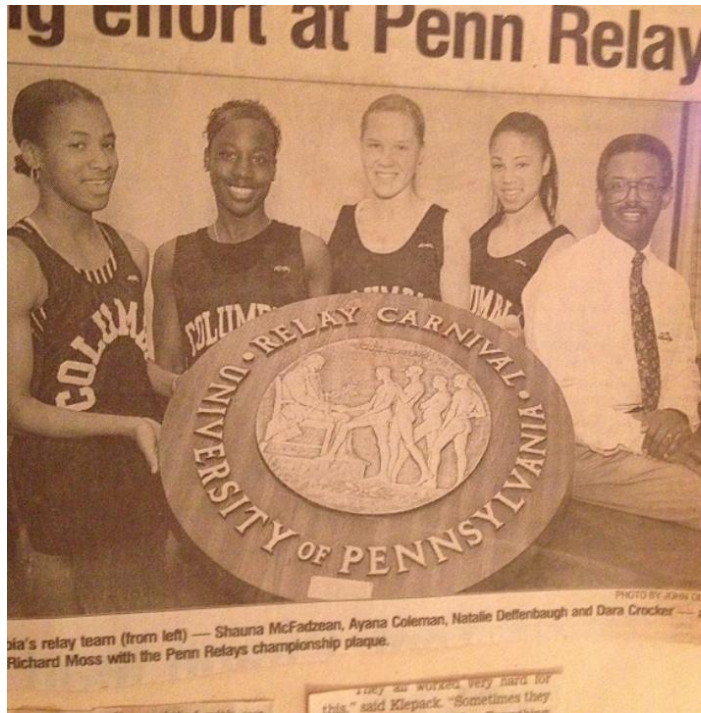
****Any slide with contact information or an action item has a blue background.***

The Team Leader Role

Ms. Varney, Mr. Stewart and Ms. O'Sullivan

- Team leaders foster communication between administration, teachers, and students. Teacher teams, led by a team leader, support and get to know a smaller group of students to create a **personalized learning environment**.
- Team leaders support interventions for students (academic, attendance, and interpersonal).
 - Team leaders **oversee & organize grade level activities**
*field trips *assemblies and convocations
 - Team leaders discuss and support students' social and emotional needs with all stakeholders involved.

Who is the MMS Principal???



The MMS Leadership Team

Meet Mr. Brown and Mr. King



(L-R)

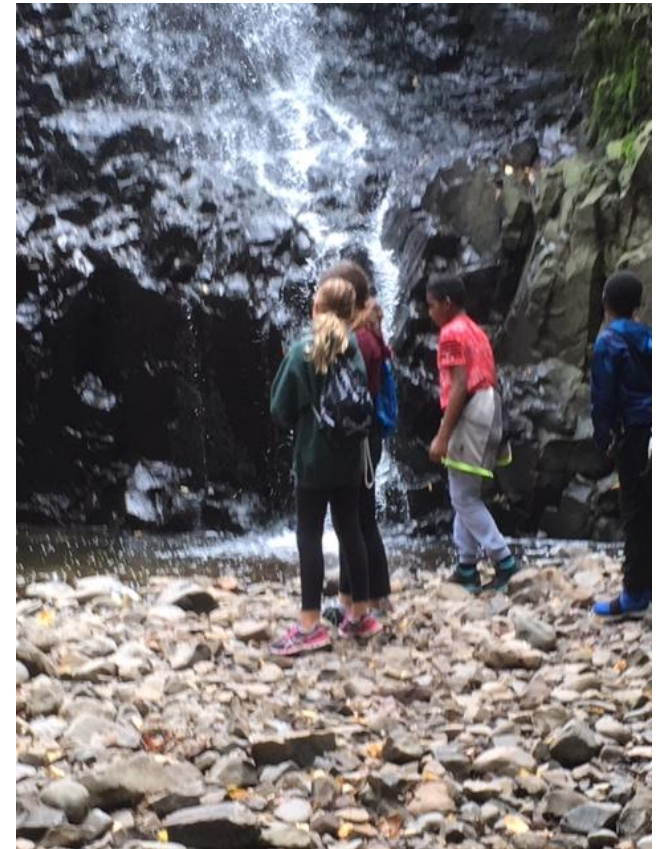
Dara Crocker Gronau, Principal

Louis Brown, Assistant Principal

Russell King, Assistant Principal (begins July 1, 2020)

6th Grade Fun!

Learning Experiences



Meet your MMS HSA!

Home and School Association ("HSA")

www.MMSHSA.org

Facebook - Maplewood Middle School Families & MMS HSA

Please join, we need YOUR support at MMS.



**Events - Grade Level Support - Teacher Appreciation - Spirit Week - Fundrai\$ing
Library Media Center - and so much more!**

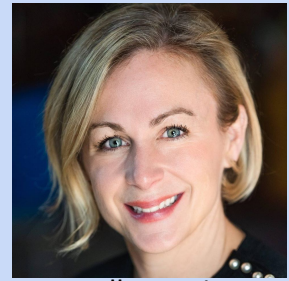


Veronica Olazabal
Co-President

Join your MMS HSA!

Website: <http://www.mmshsa.org/>

Email: mmshsainfo@gmail.com



Kelly Harris
Co-President

YOUR SUPPORT HELPS YOUR MMS-HSA

- Cultural Arts and Assemblies
- Student agenda books
- Student field trips
- Scholarships for students
- Staff appreciation events
- School beautification
- Grade level socials

HOW YOU CAN HELP YOUR MMS-HSA

- Donate to NO FRILLS and other fundraisers
- JOIN your MMS-HSA
- Become a BOARD MEMBER
- Volunteer for events
- Sign-up for weekly E-BLASTS
- Share news about events

The Middle School Schedule

Mr. Brown

3 teams (Wildcats, Silver Lions, and Red Tigers)

Each Team:

- **ELA** (English Language Arts)
- **Science**
- **Social Studies**
- **Math** is “Cross-Teamed”
- One teacher on the team is a **team leader**
- Teams developed to be **heterogeneous**

Typical Day* in Middle School

Mr. Brown

- Doors open at **8:12am** for **8:20am** first period class
- **8 Period Day**
 - Each Core Content Class (ELA, MA, Sci, SS) meets once a day
 - Two Periods a day of PE, Spanish, Music, Related Arts
 - Physical Education, Spanish, and Music (Band, Chorus, or Orchestra) Every Other Day.
 - Health and Arts meet every other day for a portion of the year.
 - Rotation Period for ELA, Math, SS and Science
 - Grade Level Lunch! (30 min.)
- Classes end at **3:05pm**

Academic Support and Wellness

Ms. Battle

- The MMS School Counseling Office is home.
- We are a safe place where children may discuss both academic and social concerns.
- We are here to listen and offer solutions to students and families and focus upon students' total well-being.
- We offer individual and group counseling, restorative circles and countless other social and emotional supports.

April Battle



Kelli Dios



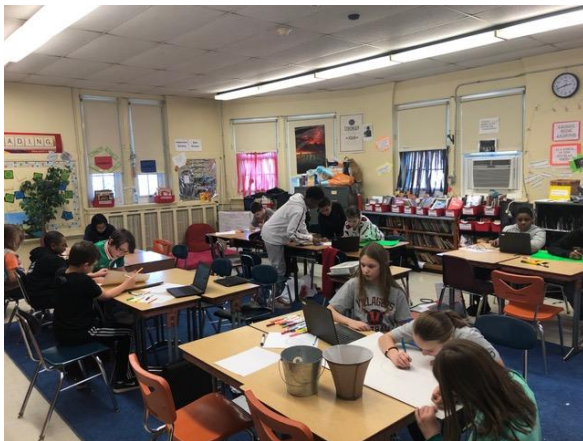
The MMS Advisory Program

Ms. Gronau

Advisory (2x a month Fridays during period 8) is the place where we engage in community building activities and provide direct and intentional support helping our students to grow in the following areas:

****Recognize and manage emotions *set and achieve positive goals *appreciate the perspectives of others *establish and maintain positive relationships *make responsible decisions *handle interpersonal situations constructively***

Resources consulted: *Engaging Schools, Rethinking Schools, Teaching Tolerance and Responsive Schools.*



Commitment to Wellness

The MMS Mindfulness Room

(Located in the Guidance Suite at MMS)

The Mindfulness Room is used for:

- Quiet time to help students to re-center themselves
- Restorative Circles
- De-escalation strategies
- Counseling sessions



The Mindfulness room at MMS was funded by a multi-year Achieve Grant and designed in partnership with MMS parents, families, and staff!

Health and Wellness at MMS

Julie Porter, RN, CSN

Goal: To support student education

- **Care for illness and injury**
- **Pediatric nursing procedures**
- **Health screenings**
- **Chronic disease management**
- **Medication administration**
- **Health education guest speaker**
- **Immunization monitoring**



Music at MMS

- All 6th grade students are required to be in a **performing ensemble** (Band, Orchestra, or Chorus) for the entire school year.
- Each ensemble meets **every other day for 50 minutes** as part of the Related Arts program.
- Band and Orchestra students are welcome to be part of the Choral program as well.



- All band and orchestra students have **pull-out lessons** in addition to class rehearsals.

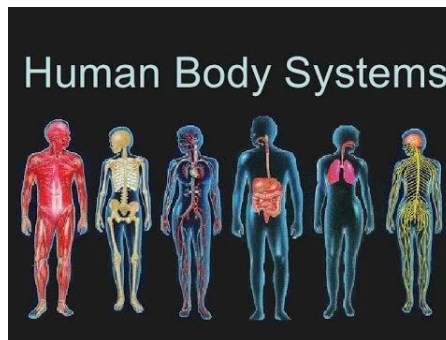
6th Grade Health

Essential Questions for 6th Grade Health:

What is Health?

How can outside factors affect my overall Health and Wellness?

- o Wellness
- o Body Systems
- o Character Education
- o Nutrition



6th Grade Physical Education



Important information for Physical Education (PE)

- Full Year of PE (every other day)
- Students change their clothing for PE
- Gender neutral changing space available
- A gym locker and lock will be provided for the students
- Indoor and outdoor programming
- Overarching program goal-**Fitness, wellness and a “survey” sport experience in preparation for CHS.**



Mathematics

6th Grade Math

Grade 6 NJSL Curriculum

This course prepares students for Pre-algebra as 7th graders.

6th Grade Math Focus

- Equivalence
- Properties of operations
- Proportional Reasoning



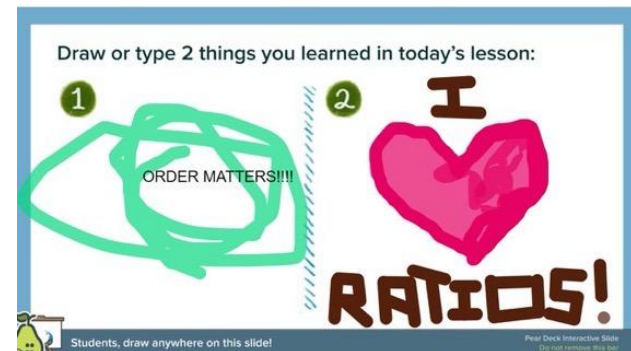
6th Grade Pre-Algebra

Grade 6 and 7 NJSL Curriculum

This course prepares students to take Algebra I as 7th graders.

6th Grade Pre-Algebra Focus

- Proportional Reasoning
- Operations with rational numbers and integers in context
- Geometry



Science

Unit Topics -

Understanding Matter

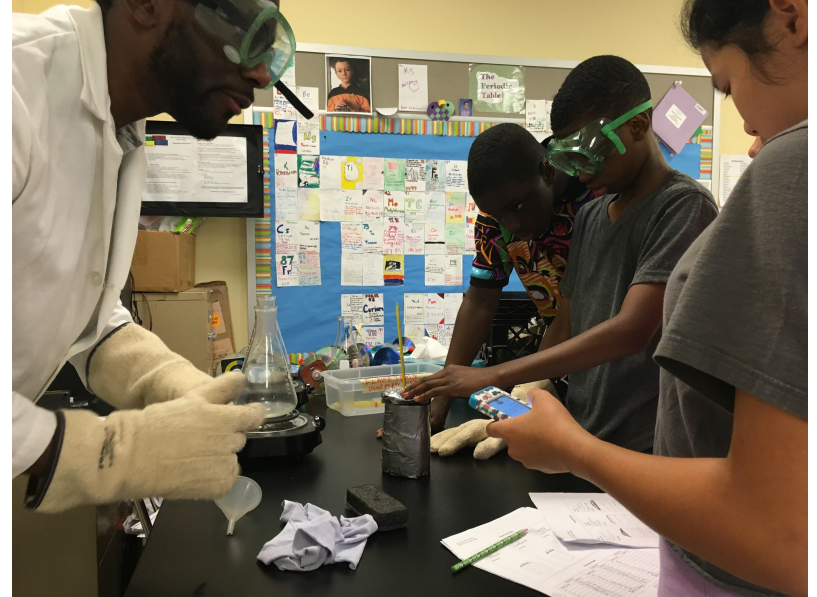
- Measuring matter (mass, volume & density)
- Phase Changes of matter
- Atoms and Molecules (w/ 3D printing)

Energy

- What is Energy
- Natural resources and the environment
- Thermal Energy

Newton's Laws of Motion

Introduction to Astronomy



- Inquiry-based learning
- Hands-on lab experiences

Spanish

Unit Topics

Greetings (Formal & Informal)

Weather/Calendar

Telling time

Numbers up to 100

Asking and responding to basic questions

Personality/physical traits to describe people

Nouns to talk about likes and dislikes

Expressing likes and dislikes



***Mandarin Chinese**

Greetings 问候

Numbers (year, month, date, birthdays)

数字 (年、月、日、生日)

Family members 家庭成员

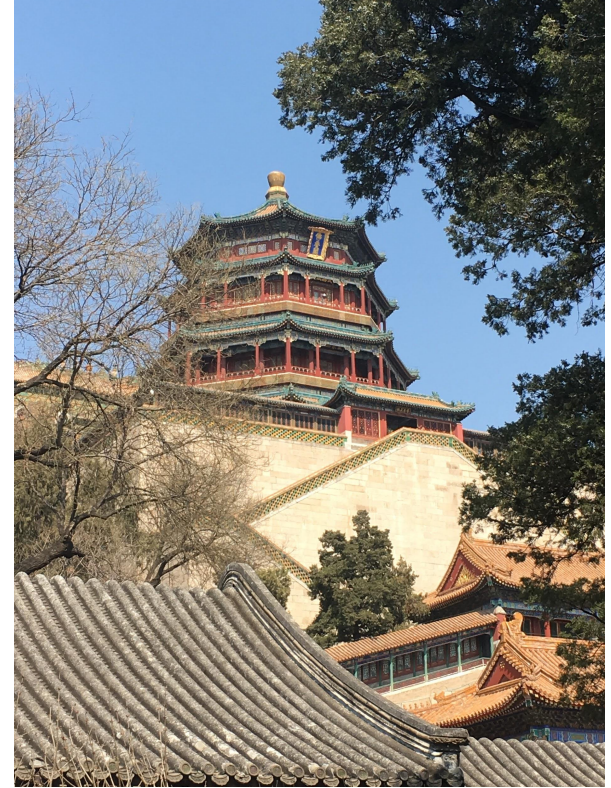
Colors 颜色

Animals 动物

Fruits 水果

Country/language 国家/语言

Asking and Responding to basic questions 提出和回答基本问题



****Pending Board of Education Approval***

Social Studies

Unit Topics:

Constitution

Civil War & Reconstruction

Westward Expansion

Immigration & Industrialization

Imperialism

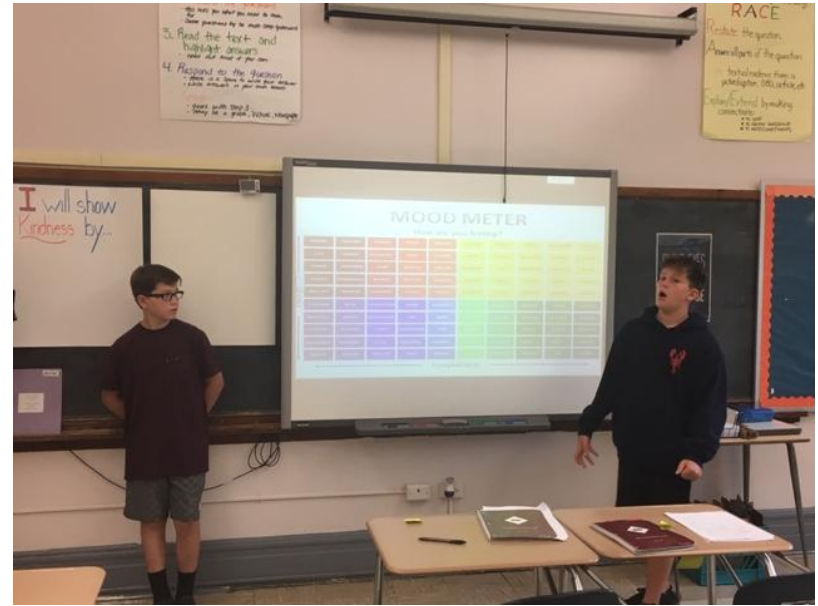
World War 1

Life Between the Wars

World War 2

Cold War

Civil Rights



Approach to Learning:

- Project-based
- Workshop Model
- Historical Empathy

English Language Arts



- Appreciation and study of **various literary genres**, such as realistic fiction, historical fiction, fantasy, and narrative nonfiction
- **Independent Reading Book Projects and Celebrations**

- **Workshop Model** using TCRWP units of study
- **Narrative Writing** (personal, historical journals, sequels/prequels, fantasy/sci-fi)
- **Argumentative Writing** (literary analysis of short stories and argument debate essays)
- **Informational Writing** (social justice and student activism)



Readers are Leaders!

****Pictured below diverse book raffle organized by MMS Student Council and in partnership with Words Bookstore!***



Visual Arts

Using art materials, art techniques, color, and elements of Art

- **Art 2D-Painting**
- **Art 3D-Ceramics and papier-mache**



Summer Passion Projects

District supervisors are working in partnership with our Maplewood and South Orange public libraries to engage interest students in summer “passion projects.”

*Passion
Projects*

Check out the link to the trailer on this below

**[Summer Passion
Project Trailer](#)**

Summer Passion Projects

- **Passion Projects - an “invitation to learn” through Passion Projects.**
- **A passion project taps into the students' talents and genuine love for learning—the things they love and that bring them joy.**
- **A passion project is **not** an assignment,**
- **Teachers will help students to get started with visualizing the idea, getting organized, planning, scheduling and considering ways to share.**
- **Town librarians and community members have been contacted to support the students’ interests through programs and webinars.**
- **This summer will be different from summer's past. The Passion Project concept is a way to help students stay active around their interests with others in the community.**

Curriculum and Instruction Questions

Department Supervisors

Math and Science-Kim Beane kbeane@somsd.k12.nj.us

English Language Arts-Dr. Jane Bean-Folkes jbean@somsd.k12.nj.us

Special Education-Susan Ellis shellis@somsd.k12.nj.us

Special Education-Karen Thomany kthomany@somsd.k12.nj.us

Social Studies-Chris Preston cpreston@somsd.k12.nj.us

World Language and ELL-Dr. Ramon Robles rrobles@somsd.k12.nj.us

Fine Arts-James Manno jmanno@somsd.k12.nj.us

**If you have further questions about middle school curriculum, the department supervisors are noted above.*

Technology Integration at MMS

mymmslibrary.com

- **Multimedia skills**
 - Virtual Reality
 - 3D Printing
 - MakerSpace
- **Partnership with Maplewood Public Library**
- **Author Visits!**
- **Supporting the middle school curriculum and research process/co-teaching**
- **Always looking for parent volunteers!**
- **Evyn Degnan is our school library media specialist**

edegnan@somsd.k12.nj.us



Special Education

- Access to general education curriculum
- Programs-Consult, Inclusion, Pull-Out Resource, LLD
- Counseling Services:

Eric Stoudemire estoudem@somsd.k12.nj.us

Catherine Lazen clazen@somsd.k12.nj.us

Aurelis Tapia atapia@somsd.k12.nj.us

- Related Services: Speech, OT, PT
- MMS Full Time Child Study Team Case Managers

Maria Serpico, LDTC mserpico@somsd.k12.nj.us

Vanessa Navas, School Psychologist vnavas@somsd.k12.nj.us

Valencia Henry, Social Worker vhenry@somsd.k12.nj.us

If you have questions regarding the CST referral process, please refer to the SOMSD district website (Special Education).

Extended School Year (ESY)

- Middle school program coordinated by Ryann Varney
rvarney@somsd.k12.nj.us
- RISING 6th Grade included in Middle School ESY
- 30 day program: July 1st through August 12th*
**July 3rd NO ESY*
- Parent and Family Orientation: June 25. 6:30-7:30pm
**Rising Kindergarten through 12th grade.*
Preschool will be on June 23. 6:30-7:30pm
- ESY Website: to be posted on the district site in about 2 weeks time. *Date for family orientation-June 25. Time TBD.

Eric Stoudemire-School Social Worker and Anti-Bullying Specialist

Mr. Stoudemire supports our students with Special Needs with on-site counseling at MMS.

He also works with the MMS leadership team to proactively address and prevent issues of harassment, intimidation and bullying at our school.



***Cate Lazen, Social worker and Arelis Tapia (not pictured) serve at MMS on Tuesdays and Thursdays.**

504s at MMS

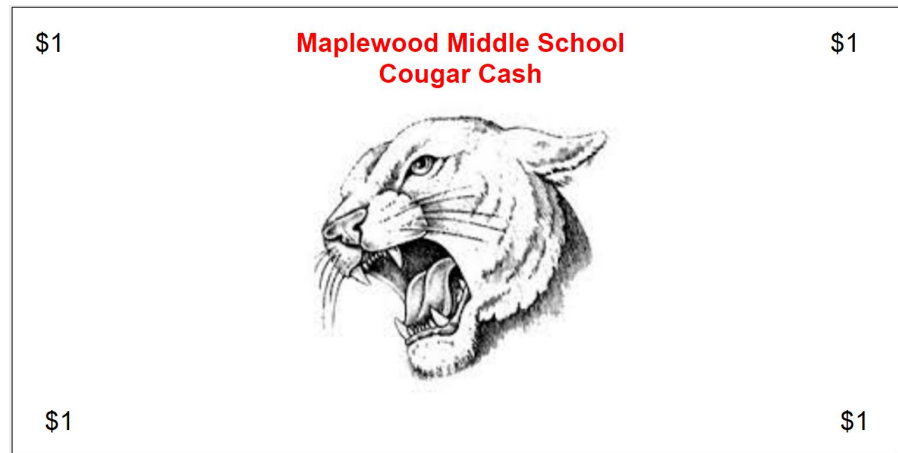
Mr. Brown, Assistant Principal and 504 coordinator

- **504's are delivered to MMS from the elementary schools during the summer.**
 - **Mr. Brown meets with elementary schools for brief transition meetings.**
- **Teachers start the year with a copy of the Section 504 Plan.**
- **An annual review will be held w/504 coordinator for building for expiration of current 504 plan.**

Positive Behavior Program

PBIS-Building positive relationships and creating incentives for our staff & students to ensure a positive and inclusive school environment.

- Work with team leaders and Student Council to implement student ideas for supporting positive behavior.
- Fundamental belief in **restorative practices.**
- Cougar All-Stars
- Friday calls
- School Wide Events (table tennis/basketball)



Get ready for Cougar Cash incentives, challenges, raffles & fun events!

What resources are available to support student success?

- School counselors
- Social workers
- Child Study Team
- Breakfast program-**7:30am**
- After school programming
- Academic Intervention Teacher-**Ms. Harris**
- Additional Math teacher-**Ms. Duffey**
- **The I&RS Process**-Mr. King, I&RS Coordinator
- Saturday Academy



Saturday Academy

***When? 9am-12pm on Saturdays
(excluding holiday weekends)***

Who participates?

- Students in need of additional academic support and/or whose families have an economic hardship.
- Structure-Small group academic work, organizational skills, and counseling. Lunch provided.

Runs November-May (pending Title I Funding*)**

After School Activities YouthNet

- **YouthNet After School Clubs-**
 - **Runs in 3 sessions: Fall, Winter, Spring**
 - **\$40 per session (students can participate in up to 4 clubs per session)**
 - **Many offerings with a wide selection to meet all types of interests**
 - **Scholarships available!**



Nail Art Club 2020

Year-Round Student Clubs Through Youthnet Include:

- **Model UN and Students for Social Change**

YouthNet Extended Care

- **After school in the Library every day until 6:00 PM**
- **HW and studying with a teacher for the first hour**
- **Works in conjunction with the HUB to provide supervised open gym**

SOPAC Grant-Alvin Ailey Dance Residency

ALVIN AILEY[®]

AMERICAN DANCE THEATER



The Hub @ MMS



What is The Hub?

The Hub is a school-based youth services program that is managed by **Family Connections, Inc.** and funded by New Jersey Department of Children and Families. 12 years ago, Family Connections was invited to be a partner with the South Orange –Maplewood School District to create The Hub to provide a variety of services at Maplewood Middle School including therapeutic recreation, academic support, counseling, small student groups, and **enrichment activities**.

The Hub (cont'd)

Family Connections is a non-profit agency based in Essex County with more than 30 specialized programs for all ages from infants to seniors.

Enrichment Activities include **groups** (Girls Empowerment Group, Teen Outreach Group, Chat 'n Chew lunch program, and mentor group), **field trips** (e.g., Rebounderz of Edison, bowling, rock climbing, movies, etc), **events** (e.g., Black History Month activities, Multicultural Dinner, Costume Party, etc) **recreation** (e.g., video games, basketball, board games), and **clubs** (arts and crafts club and intramural basketball).

The Hub @ MMS

How much does it cost?

It's **FREE!** The NJ Department of Families and Children provides an annual grant to pay for all supplies and activities.

How do I enroll my child in The Hub?

All you have to do is sign a consent form and your child can participate in all activities. Consent forms are included in the welcome packet on the MMS website.

When is it open?

The Hub is open from **9:30am to 5:30pm** during regular school days and **12:30-3pm** during half days. We are open during Spring recess from **12pm to 3pm** unless we have a field trip.

The Hub @ MMS

What does non-custodial supervision mean?

All services at The Hub are voluntary and students chose to participate in our programs and services. They may choose to get something to eat in the Village, but we strongly encourage them to **back at The Hub by 4pm. We keep daily attendance and supervise them closely while in the program, but we are not able to monitor where the students go prior to or after leaving The Hub.**

The Hub Staff @ MMS

Who works at The Hub?

Coordinator: Candice Ebbesen is a Licensed Marriage and Family Therapist in the State of NJ. She has been working with children at Family Connections for the past eleven years. cebbesen@familyconnectionsny.org

Counselor: Marie-Cassandra Jeanty, MA has been a counselor at The Hub for the past 11 years. She is fluent in Haitian-Creole.
mjeanty@familyconnectionsny.org

Youth Development Specialists:

Warith Jumuah has been staff member at The Hub for the past 5 years. He has a BA in education and is very popular among the students.

Elda Dominguez has been a staff member since 2018. She has a MA in psychology from a university in Cuba, an Associates degree from Essex County College and she is fluent in Spanish.

The MMS Musical

→ **Cast** → **Art Crew** → **Costumes**
→ **Stage Crew** → **Assistant Directors**



Student Council

How do I apply?

There is an application process and Student Council works in committees throughout the year.

What does Student Council do?

- Battle of the Classes
- News on Waffles
- MLK Peace March
- Meets with Principal
- School Stores (lunch & after school)
- Community volunteer work



And many more clubs!

Full Year Clubs at MMS

- Martin Luther King, Jr. Association and Step Team
- Model UN
- Intramural Sports
- Science Fair
- MMS World Online Newspaper
- Student Council
- MMS Musical

and many more!



MMS is a Special Place



2020 marks the 20th year of this annual march in recognition of Dr. Martin Luther King Jr.'s life and achievements. This unique silent march helps people reflect upon a man who was committed to fighting nonviolently for equality and peace. His vision of America is indeed responsible for the diversity we so richly enjoy in the Maplewood community and school. We are not only honoring the man, but his message as well.

Supporting the Whole Child

***Here's
Daisy our
therapy
dog!***



It's all about student voice



Q&A



- Powerschool Parent Portal and Student Online Access-**6th grade MMS students will get student logins in September 2020**
- Use the PowerSchool App to access anytime.
- Log into the PowerSchool website (not app) to access electronic annual sign off forms.
- Email parentportalhelp@somsd.k12.nj.us from the parent address we have on file if you need assistance.

Welcome to Maplewood Middle Class of 2023!



Dara Gronau, Principal dgronau@somsd.k12.nj.us (Grade 6)

Louis Brown, Assistant Principal lbrown@somsd.k12.nj.us (Gr. 8)/504s

Russell King, Assistant Principal rking@somsd.k12.nj.us (*July 1, 2020) (Gr. 7/I&RS)

Julie Porter, School Nurse jporter@somsd.k12.nj.us

April Battle, School Counselor abattle@somsd.k12.nj.us

NEXT STEPS-Your Child's

Schedule

Email Mr. Brown at lbrown@somsd.k12.nj.us with your Math Selection if you have not yet done so.

Complete the survey for your child's music and related arts selections if you have not yet done so

Link here: [Music Ensemble Sign Up Form](#)

Complete the survey for your choice for World Language:

Link here: [World Language Choice Form](#)

Ask your child's 5th grade teacher if they were recommended for the MMS Summer Bridge Program

August 17-21, 2020. Contact dgronau@somsd.k12.nj.us if you have further questions.

NEXT STEPS-Social Media

Follow us on Twitter!

@MMSCougarPride

Follow us on Instagram!

@mms_cougar

