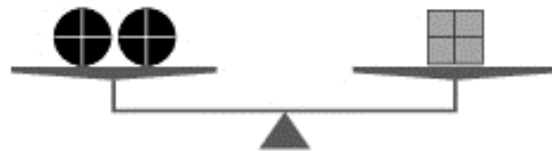


Middle School Math Course Selection 2019

Finding a Balance

Which answer can replace the question mark?



Kimberly Beane, K-8 STEM Supervisor
kbeane@somsd.k12.nj.us

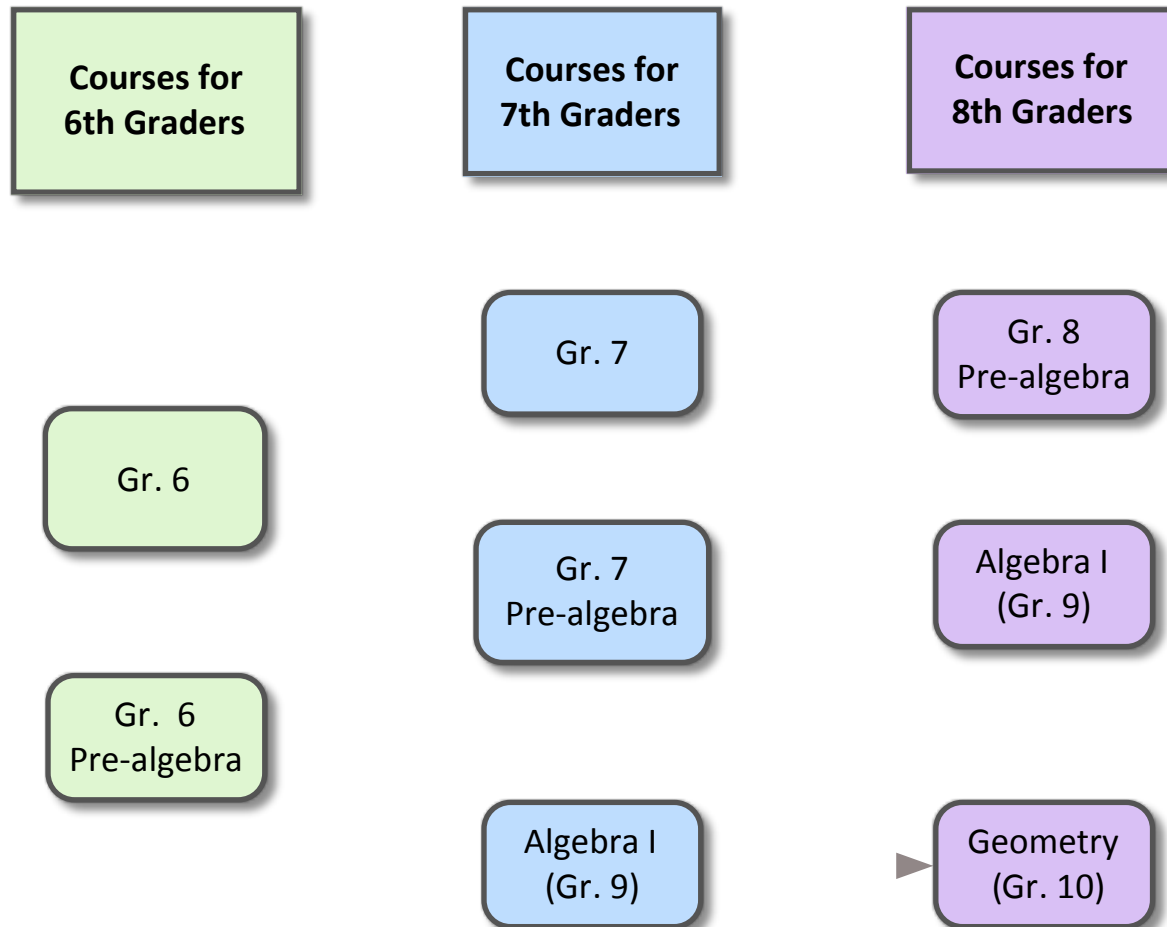
SOMSD BOE Access Policy

“All elementary, middle school, and high school parents/guardians and children in the South Orange-Maplewood School District shall have access to, and the ability to choose between current and future educational programs in all academic subjects, and at all academic levels.”

Math Course Selection 2019

April 10	Course selection letters mailed home. Online course selection opens.
April 23 & 25	Parent Information Sessions
April 30	Last day to submit Course Selection Forms Includes Summer School Sign Up
May	Summer School confirmation letters mailed home Cost, Location, Section Assignment
June	Summer Math Packets (required) and optional online practice distributed during June math classes. Math Packets are used during the first few days of school.
July 8-26	Summer Math Boosters, 8:30am-12:30pm M-F

Middle School Math Courses

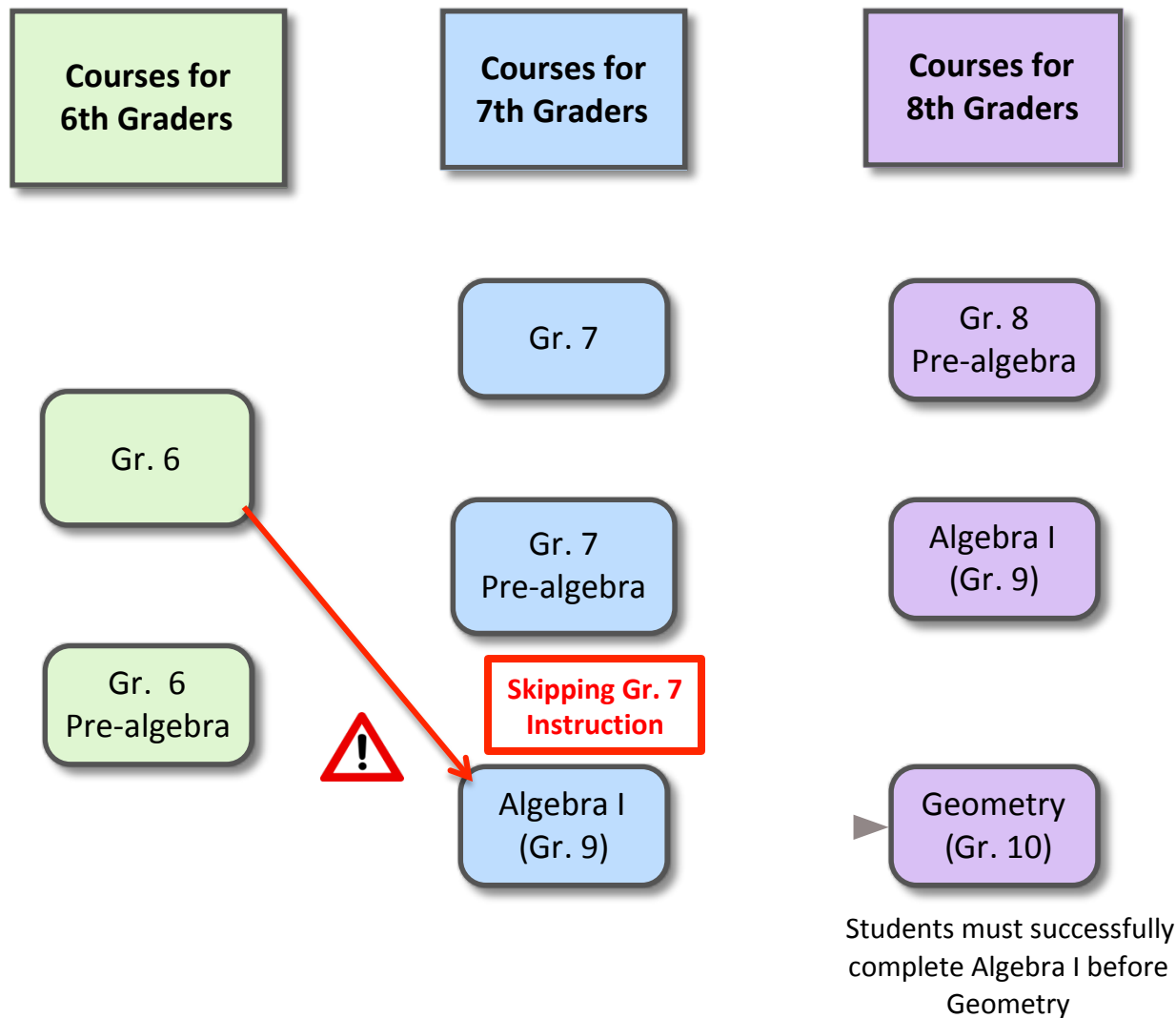


Algebra I and Geometry...

- Do not appear on CHS transcripts
- Satisfy the NJ course requirements for Algebra I and Geometry
- NJ currently requires a state test in Algebra I to demonstrate mastery

Students must successfully complete Algebra I before Geometry

Course	Content/ Standards	Spring state test	Preparation For...
6 Math	Gr. 6	Gr. 6	7 Math or 7 Pre-algebra
6 Pre-algebra	Gr. 6 & Gr. 7	Gr. 6	7 Algebra I
7 Math	Gr. 7	Gr. 7	8 Pre-algebra or 8 Algebra I
7 Pre-algebra	Gr. 7 & Intro. to Gr. 8	Gr. 7	8 Algebra I
8 Pre-algebra	Gr. 8	Gr. 8	9 Algebra I
Algebra I	Gr. 8 & Algebra I	Algebra I (required)	Geometry

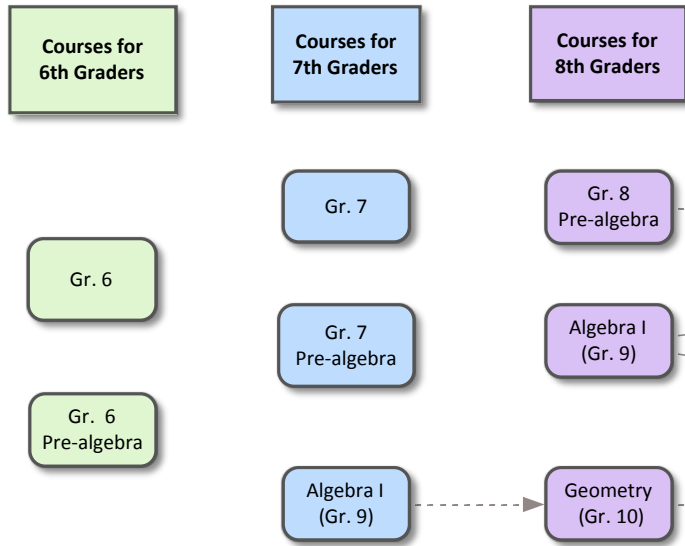


Algebra I and Geometry...

- Do not appear on CHS transcripts
- Satisfy the NJ course requirements for Algebra I and Geometry
- NJ currently requires a state test in Algebra I to demonstrate mastery

South Orange and Maplewood School District Secondary Mathematics

Middle School Math Courses

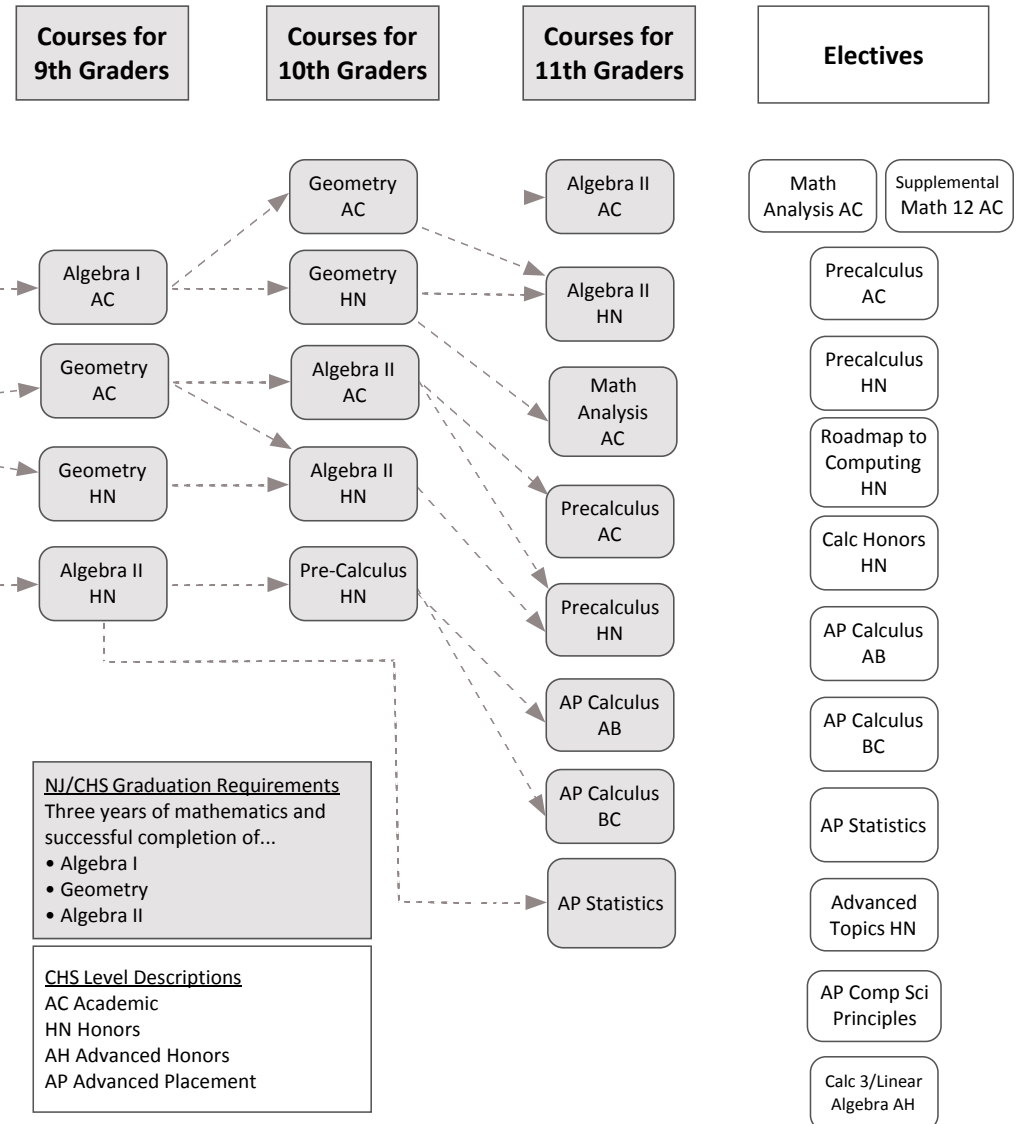


Students must successfully complete Algebra I before Geometry

Algebra I and Geometry...

- Do not appear on CHS transcripts
- Satisfy the NJ course requirements for Algebra I and Geometry
- NJ currently requires a state test in Algebra I to demonstrate mastery

High School Math Courses (Prerequisite course requirements for each course)



NJ/CHS Graduation Requirements
Three years of mathematics and successful completion of...

- Algebra I
- Geometry
- Algebra II

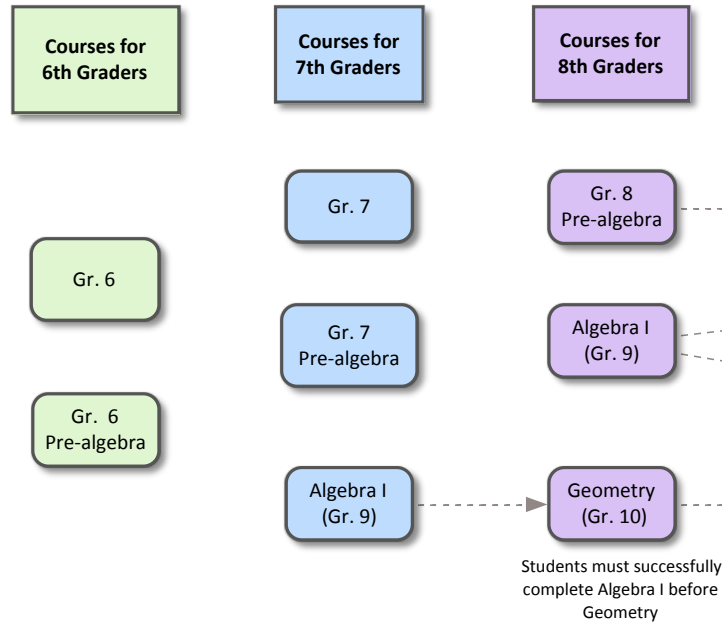
CHS Level Descriptions
AC Academic
HN Honors
AH Advanced Honors
AP Advanced Placement

Summer Preparation

Summer Packet (Required)	Tailored for student's selected math course. Teacher will provide 1 copy in June. Copies and answers will be on the district website. Used during the first week of school in September.
Summer Math Boosters	July 8-July 26, 8:30am-12:30pm Cost TBA (Approx. \$400)(Scholarships Available) Preparation for selected math course Students grouped by course
Summer Online (optional)	Practice Problems and Tutorials for optional summer readiness. Assigned by current math teacher in June.

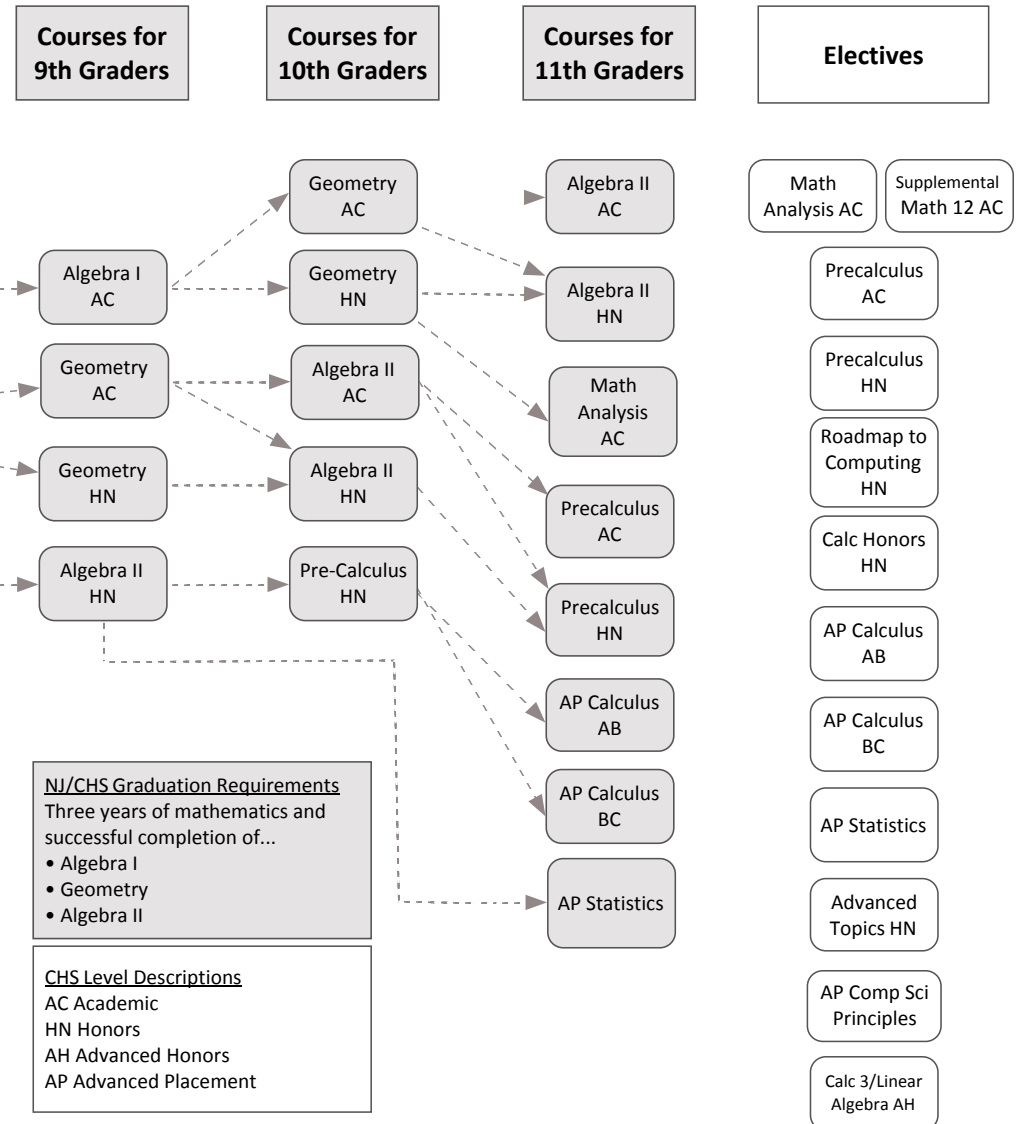
South Orange and Maplewood School District Secondary Mathematics

Middle School Math Courses



High School Math Courses

(Prerequisite course requirements for each course)



Algebra I and Geometry...

- Do not appear on CHS transcripts
- Satisfy the NJ course requirements for Algebra I and Geometry
- NJ currently requires a state test in Algebra I to demonstrate mastery